

Instrument Summary:

Instrument Name: iCAP RQ
Serial Number: Undefined

LabBook Summary:

Path and filename: _Application Data\Workspace\LabBooks\2023_12_21_M94_CrMnFeCoNiCu_SGoe-mtr.imexp
LabBook created by: THERMOF-6VBH8PN\CPMS-User
Based on Template: 2022_08_09_M28Ga_Template
Experiment Configuration: iCAP RQ mit Cetac Teledyne Autosampler
Evaluation: eQuant
Qtegra version (last saved): 2.10.4345.136
LabBook started: 21-Dec-23 13:08:42
LabBook finished: 21-Dec-23 15:32:35

Method Summary:

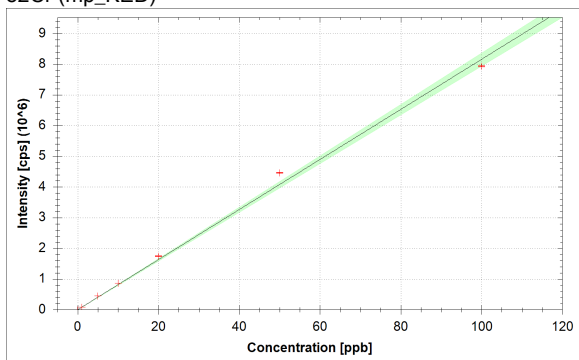
| Isotope | Mode | Dwell time [s] | No. of channels | Spacing | Resolution | Internal Standard |
|---------------|--------|----------------|-----------------|---------|------------|-------------------|
| 52Cr (mp_KED) | mp_KED | 0.01 | 1 | 0.1 | Normal | |
| 53Cr (mp_KED) | mp_KED | 0.01 | 1 | 0.1 | Normal | |
| 55Mn (mp_KED) | mp_KED | 0.01 | 1 | 0.1 | Normal | |
| 56Fe (mp_KED) | mp_KED | 0.01 | 1 | 0.1 | Normal | |
| 57Fe (mp_KED) | mp_KED | 0.01 | 1 | 0.1 | Normal | |
| 59Co (mp_KED) | mp_KED | 0.01 | 1 | 0.1 | Normal | |
| 60Ni (mp_KED) | mp_KED | 0.01 | 1 | 0.1 | Normal | |
| 61Ni (mp_KED) | mp_KED | 0.01 | 1 | 0.1 | Normal | |
| 62Ni (mp_KED) | mp_KED | 0.01 | 1 | 0.1 | Normal | |
| 63Cu (mp_KED) | mp_KED | 0.01 | 1 | 0.1 | Normal | |
| 65Cu (mp_KED) | mp_KED | 0.01 | 1 | 0.1 | Normal | |
| 95Mo (mp_KED) | mp_KED | 0.01 | 1 | 0.1 | Normal | |
| 97Mo (mp_KED) | mp_KED | 0.01 | 1 | 0.1 | Normal | |

| Isotope | Mode | Dwell time [s] | No. of channels | Spacing | Resolution |
|---------------|--------|----------------|-----------------|---------|------------|
| 52Cr (mp_KED) | mp_KED | 0.01 | 1 | 0.1 | Normal |
| 53Cr (mp_KED) | mp_KED | 0.01 | 1 | 0.1 | Normal |
| 55Mn (mp_KED) | mp_KED | 0.01 | 1 | 0.1 | Normal |
| 56Fe (mp_KED) | mp_KED | 0.01 | 1 | 0.1 | Normal |
| 57Fe (mp_KED) | mp_KED | 0.01 | 1 | 0.1 | Normal |
| 59Co (mp_KED) | mp_KED | 0.01 | 1 | 0.1 | Normal |
| 60Ni (mp_KED) | mp_KED | 0.01 | 1 | 0.1 | Normal |
| 61Ni (mp_KED) | mp_KED | 0.01 | 1 | 0.1 | Normal |
| 62Ni (mp_KED) | mp_KED | 0.01 | 1 | 0.1 | Normal |
| 63Cu (mp_KED) | mp_KED | 0.01 | 1 | 0.1 | Normal |
| 65Cu (mp_KED) | mp_KED | 0.01 | 1 | 0.1 | Normal |
| 95Mo (mp_KED) | mp_KED | 0.01 | 1 | 0.1 | Normal |
| 97Mo (mp_KED) | mp_KED | 0.01 | 1 | 0.1 | Normal |

| No. of sweeps | Time per sweep [s] | Time per main run [s] |
|---------------|--------------------|-----------------------|
| 100 | 0.13 | 13 |

Calibration Curves:

52Cr (mp_KED)



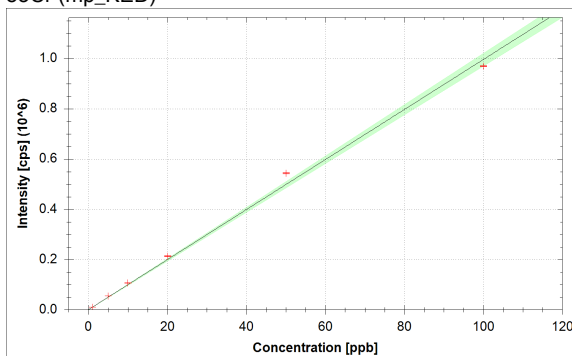
$$f(x) = 81580.5660 \cdot x + 808.0295$$

$$R^2 = 0.9963$$

$$\text{BEC} = 0.010 \text{ ppb}$$

$$\text{LoD} = 0.0018 \text{ ppb}$$

53Cr (mp_KED)



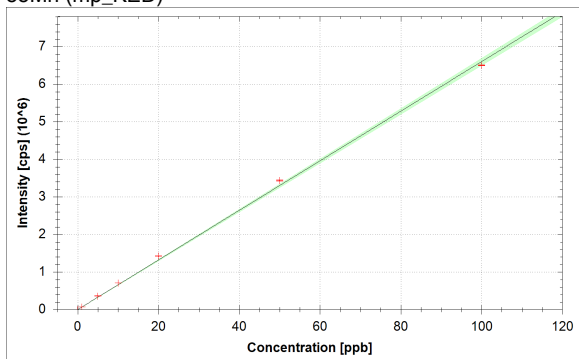
$$f(x) = 9959.9728 \cdot x + 308.2552$$

$$R^2 = 0.9965$$

$$\text{BEC} = 0.031 \text{ ppb}$$

$$\text{LoD} = 0.0084 \text{ ppb}$$

55Mn (mp_KED)



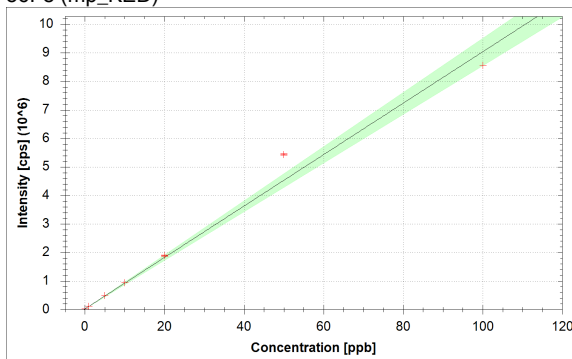
$$f(x) = 66010.0318 \cdot x + 271.0042$$

$$R^2 = 0.9989$$

$$\text{BEC} = 0.004 \text{ ppb}$$

$$\text{LoD} = 0.0010 \text{ ppb}$$

56Fe (mp_KED)



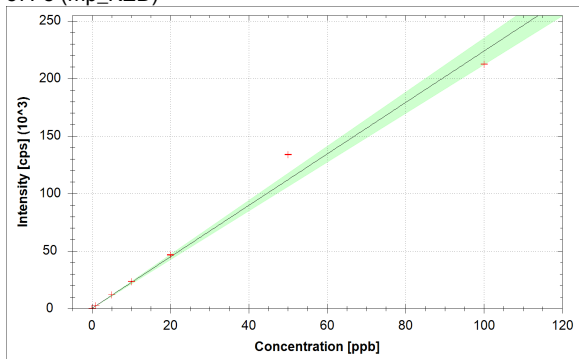
$$f(x) = 90161.0621 \cdot x + 22299.2653$$

$$R^2 = 0.9848$$

$$\text{BEC} = 0.247 \text{ ppb}$$

$$\text{LoD} = 0.0122 \text{ ppb}$$

57Fe (mp_KED)



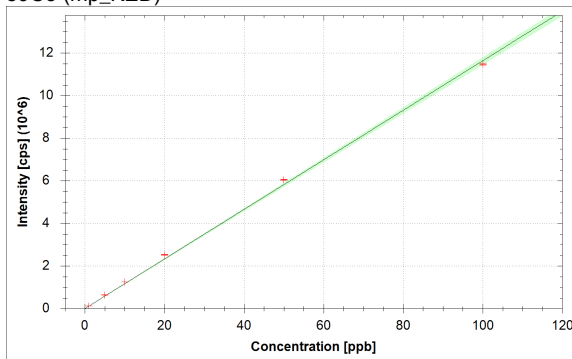
$$f(x) = 2235.1954 \cdot x + 255.2536$$

$$R^2 = 0.9856$$

$$\text{BEC} = 0.114 \text{ ppb}$$

$$\text{LoD} = 0.0055 \text{ ppb}$$

59Co (mp_KED)



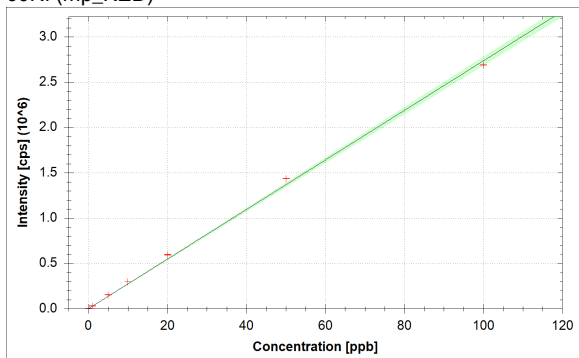
$$f(x) = 116355.5456 \cdot x + 609.2677$$

$$R^2 = 0.9989$$

$$\text{BEC} = 0.005 \text{ ppb}$$

$$\text{LoD} = 0.0009 \text{ ppb}$$

60Ni (mp_KED)



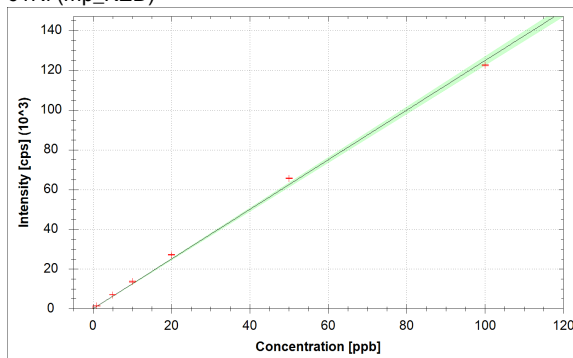
$$f(x) = 27350.9581 \cdot x + 627.2684$$

$$R^2 = 0.9985$$

$$\text{BEC} = 0.023 \text{ ppb}$$

$$\text{LoD} = 0.0030 \text{ ppb}$$

61Ni (mp_KED)



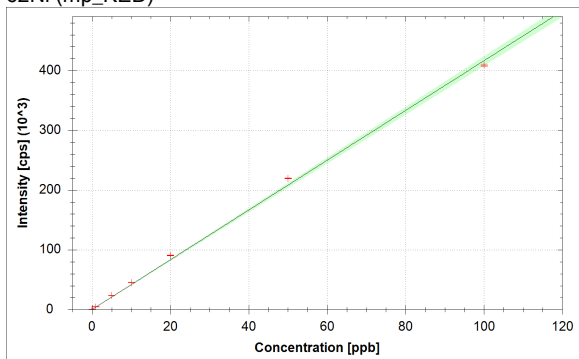
$$f(x) = 1248.4418 \cdot x + 23.0001$$

$$R^2 = 0.9983$$

$$\text{BEC} = 0.018 \text{ ppb}$$

$$\text{LoD} = 0.0092 \text{ ppb}$$

62Ni (mp_KED)



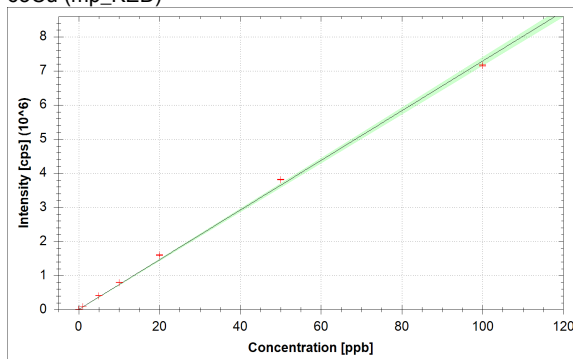
$$f(x) = 4163.7649 \cdot x + 96.2508$$

$$R^2 = 0.9983$$

$$\text{BEC} = 0.023 \text{ ppb}$$

$$\text{LoD} = 0.0106 \text{ ppb}$$

63Cu (mp_KED)



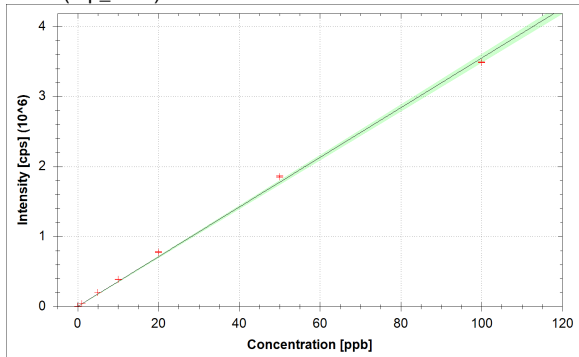
$$f(x) = 72811.3189 \cdot x + 4003.9102$$

$$R^2 = 0.9985$$

$$\text{BEC} = 0.055 \text{ ppb}$$

$$\text{LoD} = 0.0032 \text{ ppb}$$

65Cu (mp_KED)



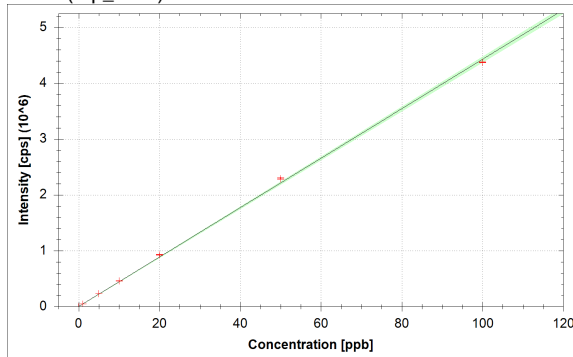
$$f(x) = 35465.6274 \cdot x + 1964.6627$$

$$R^2 = 0.9985$$

$$\text{BEC} = 0.055 \text{ ppb}$$

$$\text{LoD} = 0.0041 \text{ ppb}$$

95Mo (mp_KED)



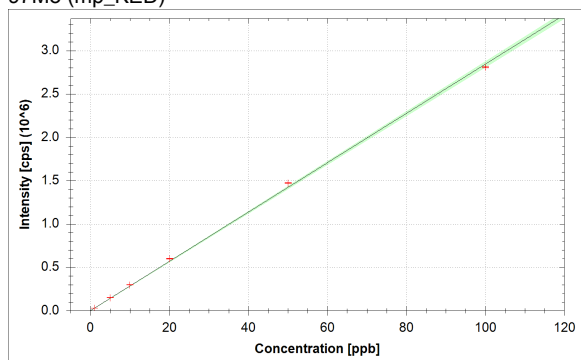
$$f(x) = 44270.8143 \cdot x + 1088.0521$$

$$R^2 = 0.9993$$

$$\text{BEC} = 0.025 \text{ ppb}$$

$$\text{LoD} = 0.0038 \text{ ppb}$$

97Mo (mp_KED)



$$f(x) = 28427.4557 \cdot x + 700.5229$$

$$R^2 = 0.9993$$

$$\text{BEC} = 0.025 \text{ ppb}$$

$$\text{LoD} = 0.0025 \text{ ppb}$$

Standards:

Analysis Index: 4
Analysis Name: M28SnPd 0 ppb 300µL HNO3 22.09.2023 mtr
Analysis Type: STD
Analysis Started at: 21-Dec-23 13:24:19
Standard (Stock): M94 0
Standard DF: 1

| Category | Concentration average | Concentration RSD | Standard Concentration |
|---------------|-----------------------|-------------------|------------------------|
| 52Cr (mp_KED) | 0.000 ppb | 2.6 % | 0.000 ppb |
| 53Cr (mp_KED) | 0.000 ppb | 5.0 % | 0.000 ppb |
| 55Mn (mp_KED) | 0.000 ppb | 7.5 % | 0.000 ppb |
| 56Fe (mp_KED) | 0.000 ppb | 0.8 % | 0.000 ppb |
| 57Fe (mp_KED) | 0.000 ppb | 6.0 % | 0.000 ppb |
| 59Co (mp_KED) | 0.000 ppb | 2.6 % | 0.000 ppb |
| 60Ni (mp_KED) | 0.000 ppb | 5.4 % | 0.000 ppb |
| 61Ni (mp_KED) | 0.000 ppb | 12.8 % | 0.000 ppb |
| 62Ni (mp_KED) | 0.000 ppb | 10.7 % | 0.000 ppb |
| 63Cu (mp_KED) | 0.000 ppb | 1.7 % | 0.000 ppb |
| 65Cu (mp_KED) | 0.000 ppb | 4.4 % | 0.000 ppb |
| 95Mo (mp_KED) | 0.000 ppb | 10.5 % | 0.000 ppb |
| 97Mo (mp_KED) | 0.000 ppb | 10.2 % | 0.000 ppb |

Standards:

Analysis Index: 5
Analysis Name: M28SnPd 1 ppb 300µL HNO3 22.09.2023 mtr
Analysis Type: STD
Analysis Started at: 21-Dec-23 13:29:27
Standard (Stock): M94 1
Standard DF: 1

| Category | Concentration average | Concentration RSD | Standard Concentration |
|---------------|-----------------------|-------------------|------------------------|
| 52Cr (mp_KED) | 1.063 ppb | 0.7 % | 1.000 ppb |
| 53Cr (mp_KED) | 1.069 ppb | 1.3 % | 1.000 ppb |
| 55Mn (mp_KED) | 1.074 ppb | 0.7 % | 1.000 ppb |
| 56Fe (mp_KED) | 1.019 ppb | 0.5 % | 1.000 ppb |
| 57Fe (mp_KED) | 1.031 ppb | 3.6 % | 1.000 ppb |
| 59Co (mp_KED) | 1.076 ppb | 0.6 % | 1.000 ppb |
| 60Ni (mp_KED) | 1.098 ppb | 0.5 % | 1.000 ppb |
| 61Ni (mp_KED) | 1.107 ppb | 0.9 % | 1.000 ppb |
| 62Ni (mp_KED) | 1.094 ppb | 1.0 % | 1.000 ppb |
| 63Cu (mp_KED) | 1.094 ppb | 0.3 % | 1.000 ppb |
| 65Cu (mp_KED) | 1.092 ppb | 0.3 % | 1.000 ppb |
| 95Mo (mp_KED) | 1.028 ppb | 0.8 % | 1.000 ppb |
| 97Mo (mp_KED) | 1.036 ppb | 1.2 % | 1.000 ppb |

Standards:

Analysis Index: 6
Analysis Name: M28SnPd 5 ppb 300µL HNO3 22.09.2023 mtr
Analysis Type: STD
Analysis Started at: 21-Dec-23 13:34:34
Standard (Stock): M94 5
Standard DF: 1

| Category | Concentration average | Concentration RSD | Standard Concentration |
|---------------|-----------------------|-------------------|------------------------|
| 52Cr (mp_KED) | 5.457 ppb | 0.3 % | 5.000 ppb |
| 53Cr (mp_KED) | 5.449 ppb | 0.7 % | 5.000 ppb |
| 55Mn (mp_KED) | 5.471 ppb | 0.6 % | 5.000 ppb |
| 56Fe (mp_KED) | 5.282 ppb | 0.4 % | 5.000 ppb |
| 57Fe (mp_KED) | 5.274 ppb | 1.2 % | 5.000 ppb |
| 59Co (mp_KED) | 5.491 ppb | 0.2 % | 5.000 ppb |
| 60Ni (mp_KED) | 5.600 ppb | 0.4 % | 5.000 ppb |
| 61Ni (mp_KED) | 5.617 ppb | 0.9 % | 5.000 ppb |
| 62Ni (mp_KED) | 5.630 ppb | 0.5 % | 5.000 ppb |
| 63Cu (mp_KED) | 5.586 ppb | 0.3 % | 5.000 ppb |
| 65Cu (mp_KED) | 5.621 ppb | 0.5 % | 5.000 ppb |
| 95Mo (mp_KED) | 5.291 ppb | 0.3 % | 5.000 ppb |
| 97Mo (mp_KED) | 5.335 ppb | 0.1 % | 5.000 ppb |

Standards:

Analysis Index: 7
Analysis Name: M28SnPd 10 ppb 300µL HNO3 22.09.2023 mtr
Analysis Type: STD
Analysis Started at: 21-Dec-23 13:39:42
Standard (Stock): M94 10
Standard DF: 1

| Category | Concentration average | Concentration RSD | Standard Concentration |
|---------------|-----------------------|-------------------|------------------------|
| 52Cr (mp_KED) | 10.606 ppb | 0.5 % | 10.000 ppb |
| 53Cr (mp_KED) | 10.656 ppb | 0.4 % | 10.000 ppb |
| 55Mn (mp_KED) | 10.717 ppb | 0.2 % | 10.000 ppb |
| 56Fe (mp_KED) | 10.274 ppb | 0.3 % | 10.000 ppb |
| 57Fe (mp_KED) | 10.405 ppb | 0.7 % | 10.000 ppb |
| 59Co (mp_KED) | 10.726 ppb | 0.5 % | 10.000 ppb |
| 60Ni (mp_KED) | 10.866 ppb | 0.3 % | 10.000 ppb |
| 61Ni (mp_KED) | 10.918 ppb | 1.5 % | 10.000 ppb |
| 62Ni (mp_KED) | 10.871 ppb | 0.5 % | 10.000 ppb |
| 63Cu (mp_KED) | 10.887 ppb | 0.5 % | 10.000 ppb |
| 65Cu (mp_KED) | 10.947 ppb | 0.6 % | 10.000 ppb |
| 95Mo (mp_KED) | 10.363 ppb | 0.6 % | 10.000 ppb |
| 97Mo (mp_KED) | 10.493 ppb | 0.7 % | 10.000 ppb |

Standards:

Analysis Index: 8
Analysis Name: M28SnPd 20 ppb 300µL HNO3 22.09.2023 mtr
Analysis Type: STD
Analysis Started at: 21-Dec-23 13:44:50
Standard (Stock): M94 20
Standard DF: 1

| Category | Concentration average | Concentration RSD | Standard Concentration |
|---------------|-----------------------|-------------------|------------------------|
| 52Cr (mp_KED) | 21.366 ppb | 0.6 % | 20.000 ppb |
| 53Cr (mp_KED) | 21.378 ppb | 0.8 % | 20.000 ppb |
| 55Mn (mp_KED) | 21.594 ppb | 0.7 % | 20.000 ppb |
| 56Fe (mp_KED) | 20.722 ppb | 0.9 % | 20.000 ppb |
| 57Fe (mp_KED) | 20.718 ppb | 1.3 % | 20.000 ppb |
| 59Co (mp_KED) | 21.695 ppb | 0.6 % | 20.000 ppb |
| 60Ni (mp_KED) | 21.737 ppb | 0.7 % | 20.000 ppb |
| 61Ni (mp_KED) | 21.711 ppb | 0.9 % | 20.000 ppb |
| 62Ni (mp_KED) | 21.743 ppb | 0.7 % | 20.000 ppb |
| 63Cu (mp_KED) | 21.844 ppb | 0.6 % | 20.000 ppb |
| 65Cu (mp_KED) | 21.900 ppb | 0.7 % | 20.000 ppb |
| 95Mo (mp_KED) | 20.942 ppb | 0.7 % | 20.000 ppb |
| 97Mo (mp_KED) | 21.113 ppb | 0.8 % | 20.000 ppb |

Standards:

Analysis Index: 9
Analysis Name: M28SnPd 50 ppb 300µL HNO3 22.09.2023 mtr
Analysis Type: STD
Analysis Started at: 21-Dec-23 13:49:59
Standard (Stock): M94 50
Standard DF: 1

| Category | Concentration average | Concentration RSD | Standard Concentration |
|---------------|-----------------------|-------------------|------------------------|
| 52Cr (mp_KED) | 54.660 ppb | 0.4 % | 50.000 ppb |
| 53Cr (mp_KED) | 54.534 ppb | 0.6 % | 50.000 ppb |
| 55Mn (mp_KED) | 52.064 ppb | 0.5 % | 50.000 ppb |
| 56Fe (mp_KED) | 60.101 ppb | 0.5 % | 50.000 ppb |
| 57Fe (mp_KED) | 59.791 ppb | 0.2 % | 50.000 ppb |
| 59Co (mp_KED) | 51.920 ppb | 0.5 % | 50.000 ppb |
| 60Ni (mp_KED) | 52.475 ppb | 0.2 % | 50.000 ppb |
| 61Ni (mp_KED) | 52.637 ppb | 0.3 % | 50.000 ppb |
| 62Ni (mp_KED) | 52.676 ppb | 0.2 % | 50.000 ppb |
| 63Cu (mp_KED) | 52.324 ppb | 0.4 % | 50.000 ppb |
| 65Cu (mp_KED) | 52.306 ppb | 0.5 % | 50.000 ppb |
| 95Mo (mp_KED) | 51.870 ppb | 0.6 % | 50.000 ppb |
| 97Mo (mp_KED) | 51.803 ppb | 0.5 % | 50.000 ppb |

Standards:

Analysis Index: 10
Analysis Name: M28SnPd 100 ppb 300µL HNO3 22.09.2023 mtr
Analysis Type: STD
Analysis Started at: 21-Dec-23 13:55:09
Standard (Stock): M94 100
Standard DF: 1

| Category | Concentration average | Concentration RSD | Standard Concentration |
|---------------|-----------------------|-------------------|------------------------|
| 52Cr (mp_KED) | 97.313 ppb | 0.3 % | 100.000 ppb |
| 53Cr (mp_KED) | 97.369 ppb | 0.1 % | 100.000 ppb |
| 55Mn (mp_KED) | 98.553 ppb | 0.2 % | 100.000 ppb |
| 56Fe (mp_KED) | 94.764 ppb | 0.0 % | 100.000 ppb |
| 57Fe (mp_KED) | 94.907 ppb | 0.1 % | 100.000 ppb |
| 59Co (mp_KED) | 98.603 ppb | 0.3 % | 100.000 ppb |
| 60Ni (mp_KED) | 98.297 ppb | 0.1 % | 100.000 ppb |
| 61Ni (mp_KED) | 98.216 ppb | 0.3 % | 100.000 ppb |
| 62Ni (mp_KED) | 98.194 ppb | 0.5 % | 100.000 ppb |
| 63Cu (mp_KED) | 98.350 ppb | 0.3 % | 100.000 ppb |
| 65Cu (mp_KED) | 98.340 ppb | 0.1 % | 100.000 ppb |
| 95Mo (mp_KED) | 98.826 ppb | 0.1 % | 100.000 ppb |
| 97Mo (mp_KED) | 98.809 ppb | 0.4 % | 100.000 ppb |

Sample List Summary:

Instrument Name: iCAP RQ

| Index: | Label: | Main runs: | Survey runs: | Start time: |
|--------|---|------------|--------------|--------------------|
| 1 | Rinse HNO3 2% | 4 | 0 | 21-Dec-23 13:09:00 |
| 2 | Rinse HNO3 2% | 4 | 0 | 21-Dec-23 13:14:06 |
| 3 | Rinse HNO3 2% | 4 | 0 | 21-Dec-23 13:19:13 |
| 4 | M28SnPd 0 ppb 300µL HNO3 22.09.2023 mtr | 4 | 0 | 21-Dec-23 13:24:19 |
| 5 | M28SnPd 1 ppb 300µL HNO3 22.09.2023 mtr | 4 | 0 | 21-Dec-23 13:29:27 |
| 6 | M28SnPd 5 ppb 300µL HNO3 22.09.2023 mtr | 4 | 0 | 21-Dec-23 13:34:34 |
| 7 | M28SnPd 10 ppb 300µL HNO3 22.09.2023 mtr | 4 | 0 | 21-Dec-23 13:39:42 |
| 8 | M28SnPd 20 ppb 300µL HNO3 22.09.2023 mtr | 4 | 0 | 21-Dec-23 13:44:50 |
| 9 | M28SnPd 50 ppb 300µL HNO3 22.09.2023 mtr | 4 | 0 | 21-Dec-23 13:49:59 |
| 10 | M28SnPd 100 ppb 300µL HNO3 22.09.2023 mtr | 4 | 0 | 21-Dec-23 13:55:09 |
| 11 | M28Ru 10 ppb 1500ml HNO3 in 50ml 27.10.2023 mtr | 4 | 0 | 21-Dec-23 14:00:15 |
| 12 | Rinse HNO3 2% | 4 | 0 | 21-Dec-23 14:05:24 |
| 13 | RZE-001 - 0.1mol/L KOH post OER 5h 10s - 0.1% | 4 | 0 | 21-Dec-23 14:10:34 |
| 14 | RZE-001 - 0.1mol/L KOH post OER 5h 10s - 1% | 4 | 0 | 21-Dec-23 14:15:42 |
| 15 | RZE-001 - 0.1mol/L KOH post OER 5h 10s - 10% | 4 | 0 | 21-Dec-23 14:20:49 |
| 16 | RZE-001 - 0.1mol/L KOH post OER 5h 10s - 40% | 4 | 0 | 21-Dec-23 14:25:56 |
| 17 | Rinse HNO3 2% | 4 | 0 | 21-Dec-23 14:31:05 |
| 18 | 548 Moleculite-MnCu-7.88mg-Timothy Oppotsch - 0.01% | 4 | 0 | 21-Dec-23 14:36:11 |
| 19 | 548 Moleculite-MnCu-7.88mg-Timothy Oppotsch - 0.1% | 4 | 0 | 21-Dec-23 14:41:17 |
| 20 | 548 Moleculite-MnCu-7.88mg-Timothy Oppotsch - 1% | 4 | 0 | 21-Dec-23 14:46:24 |
| 21 | Rinse HNO3 2% | 4 | 0 | 21-Dec-23 14:51:32 |
| 22 | Blind1 - Aufschluss -10% | 4 | 0 | 21-Dec-23 14:56:38 |
| 23 | Blind2 - Aufschluss -10% | 4 | 0 | 21-Dec-23 15:01:48 |
| 24 | Blind3 - Aufschluss -10% | 4 | 0 | 21-Dec-23 15:06:58 |
| 25 | Rinse HNO3 2% | 4 | 0 | 21-Dec-23 15:12:05 |
| 26 | M28Ru 10 ppb 1500ml HNO3 in 50ml 27.10.2023 mtr | 4 | 0 | 21-Dec-23 15:17:11 |
| 27 | Rinse HNO3 2% | 4 | 0 | 21-Dec-23 15:22:21 |
| 28 | pure water | 4 | 0 | 21-Dec-23 15:27:28 |

User name:

[illegible]

User name:

THERMOF-6VBH8PN\ICPMS-User

THERMOF-6VBH8PN\ICPMS-User

Sample Summary

Instrument Name: iCAP RQ

Analysis index: 1

Analysis name: Rinse HNO3 2%

Analysis started at: 21-Dec-23 13:09:00

User name: THERMOF-6VBH8PN\ICPMS-User

| Category | Concentration average | Concentration RSD |
|---------------|-----------------------|-------------------|
| 52Cr (mp_KED) | -0.003 ppb | 17.5 % |
| 53Cr (mp_KED) | 0.001 ppb | 197.4 % |
| 55Mn (mp_KED) | 0.004 ppb | 4.5 % |
| 56Fe (mp_KED) | 0.016 ppb | 13.3 % |
| 57Fe (mp_KED) | 0.035 ppb | 53.4 % |
| 59Co (mp_KED) | 0.002 ppb | 10.4 % |
| 60Ni (mp_KED) | 0.009 ppb | 3.9 % |
| 61Ni (mp_KED) | 0.017 ppb | 6.9 % |
| 62Ni (mp_KED) | 0.009 ppb | 31.9 % |
| 63Cu (mp_KED) | 0.020 ppb | 4.7 % |
| 65Cu (mp_KED) | 0.020 ppb | 9.3 % |
| 95Mo (mp_KED) | 0.005 ppb | 54.0 % |
| 97Mo (mp_KED) | 0.005 ppb | 31.0 % |

| Category | Concentration average | Intensity average | Intensity RSD |
|---------------|-----------------------|-------------------|---------------|
| 52Cr (mp_KED) | -0.003 ppb | 543 cps | 8.6 % |
| 53Cr (mp_KED) | 0.001 ppb | 320 cps | 7.2 % |
| 55Mn (mp_KED) | 0.004 ppb | 521 cps | 2.2 % |
| 56Fe (mp_KED) | 0.016 ppb | 23,749 cps | 0.8 % |
| 57Fe (mp_KED) | 0.035 ppb | 334 cps | 12.6 % |
| 59Co (mp_KED) | 0.002 ppb | 884 cps | 3.2 % |
| 60Ni (mp_KED) | 0.009 ppb | 875 cps | 1.1 % |
| 61Ni (mp_KED) | 0.017 ppb | 45 cps | 3.4 % |
| 62Ni (mp_KED) | 0.009 ppb | 133 cps | 8.8 % |
| 63Cu (mp_KED) | 0.020 ppb | 5,437 cps | 1.2 % |
| 65Cu (mp_KED) | 0.020 ppb | 2,673 cps | 2.5 % |
| 95Mo (mp_KED) | 0.005 ppb | 1,305 cps | 9.0 % |
| 97Mo (mp_KED) | 0.005 ppb | 829 cps | 4.8 % |

Sample Summary

Instrument Name: iCAP RQ

Analysis index: 2

Analysis name: Rinse HNO3 2%

Analysis started at: 21-Dec-23 13:14:06

User name: THERMOF-6VBH8PN\ICPMS-User

| Category | Concentration average | Concentration RSD |
|---------------|-----------------------|-------------------|
| 52Cr (mp_KED) | -0.004 ppb | 8.6 % |
| 53Cr (mp_KED) | -0.001 ppb | 205.1 % |
| 55Mn (mp_KED) | 0.004 ppb | 10.6 % |
| 56Fe (mp_KED) | 0.012 ppb | 35.9 % |
| 57Fe (mp_KED) | 0.025 ppb | 42.7 % |
| 59Co (mp_KED) | 0.001 ppb | 12.6 % |
| 60Ni (mp_KED) | 0.010 ppb | 13.5 % |
| 61Ni (mp_KED) | 0.012 ppb | 39.3 % |
| 62Ni (mp_KED) | 0.008 ppb | 24.4 % |
| 63Cu (mp_KED) | 0.020 ppb | 4.3 % |
| 65Cu (mp_KED) | 0.020 ppb | 4.4 % |
| 95Mo (mp_KED) | 0.006 ppb | 26.9 % |
| 97Mo (mp_KED) | 0.006 ppb | 38.0 % |

| Category | Concentration average | Intensity average | Intensity RSD |
|---------------|-----------------------|-------------------|---------------|
| 52Cr (mp_KED) | -0.004 ppb | 516 cps | 4.9 % |
| 53Cr (mp_KED) | -0.001 ppb | 295 cps | 9.2 % |
| 55Mn (mp_KED) | 0.004 ppb | 530 cps | 5.2 % |
| 56Fe (mp_KED) | 0.012 ppb | 23,408 cps | 1.7 % |
| 57Fe (mp_KED) | 0.025 ppb | 312 cps | 7.7 % |
| 59Co (mp_KED) | 0.001 ppb | 781 cps | 2.8 % |
| 60Ni (mp_KED) | 0.010 ppb | 902 cps | 4.1 % |
| 61Ni (mp_KED) | 0.012 ppb | 38 cps | 15.5 % |
| 62Ni (mp_KED) | 0.008 ppb | 129 cps | 6.2 % |
| 63Cu (mp_KED) | 0.020 ppb | 5,451 cps | 1.1 % |
| 65Cu (mp_KED) | 0.020 ppb | 2,660 cps | 1.2 % |
| 95Mo (mp_KED) | 0.006 ppb | 1,335 cps | 5.0 % |
| 97Mo (mp_KED) | 0.006 ppb | 858 cps | 7.0 % |

Sample Summary

Instrument Name: iCAP RQ

Analysis index: 3

Analysis name: Rinse HNO3 2%

Analysis started at: 21-Dec-23 13:19:13

User name: THERMOF-6VBH8PN\ICPMS-User

| Category | Concentration average | Concentration RSD |
|---------------|-----------------------|-------------------|
| 52Cr (mp_KED) | -0.003 ppb | 18.7 % |
| 53Cr (mp_KED) | -0.002 ppb | 145.5 % |
| 55Mn (mp_KED) | 0.003 ppb | 10.2 % |
| 56Fe (mp_KED) | 0.016 ppb | 25.7 % |
| 57Fe (mp_KED) | 0.018 ppb | 10.0 % |
| 59Co (mp_KED) | 0.001 ppb | 28.6 % |
| 60Ni (mp_KED) | 0.010 ppb | 10.2 % |
| 61Ni (mp_KED) | 0.006 ppb | 54.7 % |
| 62Ni (mp_KED) | 0.009 ppb | 40.6 % |
| 63Cu (mp_KED) | 0.019 ppb | 5.5 % |
| 65Cu (mp_KED) | 0.020 ppb | 6.7 % |
| 95Mo (mp_KED) | 0.005 ppb | 24.2 % |
| 97Mo (mp_KED) | 0.006 ppb | 14.0 % |

| Category | Concentration average | Intensity average | Intensity RSD |
|---------------|-----------------------|-------------------|---------------|
| 52Cr (mp_KED) | -0.003 ppb | 552 cps | 8.7 % |
| 53Cr (mp_KED) | -0.002 ppb | 289 cps | 9.7 % |
| 55Mn (mp_KED) | 0.003 ppb | 496 cps | 4.6 % |
| 56Fe (mp_KED) | 0.016 ppb | 23,727 cps | 1.5 % |
| 57Fe (mp_KED) | 0.018 ppb | 296 cps | 1.4 % |
| 59Co (mp_KED) | 0.001 ppb | 734 cps | 4.8 % |
| 60Ni (mp_KED) | 0.010 ppb | 901 cps | 3.1 % |
| 61Ni (mp_KED) | 0.006 ppb | 30 cps | 12.8 % |
| 62Ni (mp_KED) | 0.009 ppb | 133 cps | 11.1 % |
| 63Cu (mp_KED) | 0.019 ppb | 5,385 cps | 1.4 % |
| 65Cu (mp_KED) | 0.020 ppb | 2,676 cps | 1.8 % |
| 95Mo (mp_KED) | 0.005 ppb | 1,321 cps | 4.3 % |
| 97Mo (mp_KED) | 0.006 ppb | 868 cps | 2.7 % |

Sample Summary

Instrument Name: iCAP RQ

Analysis index: 4

Analysis name: M28SnPd 0 ppb 300µL HNO3 22.09.2023 mtr

Analysis started at: 21-Dec-23 13:24:19

User name: THERMOF-6VBH8PN\ICPMS-User

| Category | Concentration average | Concentration RSD |
|---------------|-----------------------|-------------------|
| 52Cr (mp_KED) | 0.000 ppb | 2.6 % |
| 53Cr (mp_KED) | 0.000 ppb | 5.0 % |
| 55Mn (mp_KED) | 0.000 ppb | 7.5 % |
| 56Fe (mp_KED) | 0.000 ppb | 0.8 % |
| 57Fe (mp_KED) | 0.000 ppb | 6.0 % |
| 59Co (mp_KED) | 0.000 ppb | 2.6 % |
| 60Ni (mp_KED) | 0.000 ppb | 5.4 % |
| 61Ni (mp_KED) | 0.000 ppb | 12.8 % |
| 62Ni (mp_KED) | 0.000 ppb | 10.7 % |
| 63Cu (mp_KED) | 0.000 ppb | 1.7 % |
| 65Cu (mp_KED) | 0.000 ppb | 4.4 % |
| 95Mo (mp_KED) | 0.000 ppb | 10.5 % |
| 97Mo (mp_KED) | 0.000 ppb | 10.2 % |

| Category | Concentration average | Intensity average | Intensity RSD |
|---------------|-----------------------|-------------------|---------------|
| 52Cr (mp_KED) | 0.000 ppb | 808 cps | 2.6 % |
| 53Cr (mp_KED) | 0.000 ppb | 308 cps | 5.0 % |
| 55Mn (mp_KED) | 0.000 ppb | 271 cps | 7.5 % |
| 56Fe (mp_KED) | 0.000 ppb | 22,299 cps | 0.8 % |
| 57Fe (mp_KED) | 0.000 ppb | 255 cps | 6.0 % |
| 59Co (mp_KED) | 0.000 ppb | 609 cps | 2.6 % |
| 60Ni (mp_KED) | 0.000 ppb | 627 cps | 5.4 % |
| 61Ni (mp_KED) | 0.000 ppb | 23 cps | 12.8 % |
| 62Ni (mp_KED) | 0.000 ppb | 96 cps | 10.7 % |
| 63Cu (mp_KED) | 0.000 ppb | 4,004 cps | 1.7 % |
| 65Cu (mp_KED) | 0.000 ppb | 1,965 cps | 4.4 % |
| 95Mo (mp_KED) | 0.000 ppb | 1,088 cps | 10.5 % |
| 97Mo (mp_KED) | 0.000 ppb | 701 cps | 10.2 % |

Sample Summary

Instrument Name: iCAP RQ

Analysis index: 5

Analysis name: M28SnPd 1 ppb 300µL HNO3 22.09.2023 mtr

Analysis started at: 21-Dec-23 13:29:27

User name: THERMOF-6VBH8PN\ICPMS-User

| Category | Concentration average | Concentration RSD |
|---------------|-----------------------|-------------------|
| 52Cr (mp_KED) | 1.063 ppb | 0.7 % |
| 53Cr (mp_KED) | 1.069 ppb | 1.3 % |
| 55Mn (mp_KED) | 1.074 ppb | 0.7 % |
| 56Fe (mp_KED) | 1.019 ppb | 0.5 % |
| 57Fe (mp_KED) | 1.031 ppb | 3.6 % |
| 59Co (mp_KED) | 1.076 ppb | 0.6 % |
| 60Ni (mp_KED) | 1.098 ppb | 0.5 % |
| 61Ni (mp_KED) | 1.107 ppb | 0.9 % |
| 62Ni (mp_KED) | 1.094 ppb | 1.0 % |
| 63Cu (mp_KED) | 1.094 ppb | 0.3 % |
| 65Cu (mp_KED) | 1.092 ppb | 0.3 % |
| 95Mo (mp_KED) | 1.028 ppb | 0.8 % |
| 97Mo (mp_KED) | 1.036 ppb | 1.2 % |

| Category | Concentration average | Intensity average | Intensity RSD |
|---------------|-----------------------|-------------------|---------------|
| 52Cr (mp_KED) | 1.063 ppb | 87,507 cps | 0.6 % |
| 53Cr (mp_KED) | 1.069 ppb | 10,953 cps | 1.2 % |
| 55Mn (mp_KED) | 1.074 ppb | 71,190 cps | 0.7 % |
| 56Fe (mp_KED) | 1.019 ppb | 114,212 cps | 0.4 % |
| 57Fe (mp_KED) | 1.031 ppb | 2,559 cps | 3.3 % |
| 59Co (mp_KED) | 1.076 ppb | 125,843 cps | 0.6 % |
| 60Ni (mp_KED) | 1.098 ppb | 30,666 cps | 0.5 % |
| 61Ni (mp_KED) | 1.107 ppb | 1,405 cps | 0.9 % |
| 62Ni (mp_KED) | 1.094 ppb | 4,650 cps | 0.9 % |
| 63Cu (mp_KED) | 1.094 ppb | 83,683 cps | 0.3 % |
| 65Cu (mp_KED) | 1.092 ppb | 40,700 cps | 0.3 % |
| 95Mo (mp_KED) | 1.028 ppb | 46,585 cps | 0.7 % |
| 97Mo (mp_KED) | 1.036 ppb | 30,154 cps | 1.2 % |

Sample Summary

Instrument Name: iCAP RQ

Analysis index: 6

Analysis name: M28SnPd 5 ppb 300µL HNO3 22.09.2023 mtr

Analysis started at: 21-Dec-23 13:34:34

User name: THERMOF-6VBH8PN\ICPMS-User

| Category | Concentration average | Concentration RSD |
|---------------|-----------------------|-------------------|
| 52Cr (mp_KED) | 5.457 ppb | 0.3 % |
| 53Cr (mp_KED) | 5.449 ppb | 0.7 % |
| 55Mn (mp_KED) | 5.471 ppb | 0.6 % |
| 56Fe (mp_KED) | 5.282 ppb | 0.4 % |
| 57Fe (mp_KED) | 5.274 ppb | 1.2 % |
| 59Co (mp_KED) | 5.491 ppb | 0.2 % |
| 60Ni (mp_KED) | 5.600 ppb | 0.4 % |
| 61Ni (mp_KED) | 5.617 ppb | 0.9 % |
| 62Ni (mp_KED) | 5.630 ppb | 0.5 % |
| 63Cu (mp_KED) | 5.586 ppb | 0.3 % |
| 65Cu (mp_KED) | 5.621 ppb | 0.5 % |
| 95Mo (mp_KED) | 5.291 ppb | 0.3 % |
| 97Mo (mp_KED) | 5.335 ppb | 0.1 % |

| Category | Concentration average | Intensity average | Intensity RSD |
|---------------|-----------------------|-------------------|---------------|
| 52Cr (mp_KED) | 5.457 ppb | 445,988 cps | 0.3 % |
| 53Cr (mp_KED) | 5.449 ppb | 54,576 cps | 0.7 % |
| 55Mn (mp_KED) | 5.471 ppb | 361,394 cps | 0.6 % |
| 56Fe (mp_KED) | 5.282 ppb | 498,543 cps | 0.4 % |
| 57Fe (mp_KED) | 5.274 ppb | 12,044 cps | 1.2 % |
| 59Co (mp_KED) | 5.491 ppb | 639,574 cps | 0.2 % |
| 60Ni (mp_KED) | 5.600 ppb | 153,795 cps | 0.4 % |
| 61Ni (mp_KED) | 5.617 ppb | 7,036 cps | 0.9 % |
| 62Ni (mp_KED) | 5.630 ppb | 23,538 cps | 0.5 % |
| 63Cu (mp_KED) | 5.586 ppb | 410,719 cps | 0.3 % |
| 65Cu (mp_KED) | 5.621 ppb | 201,319 cps | 0.5 % |
| 95Mo (mp_KED) | 5.291 ppb | 235,340 cps | 0.3 % |
| 97Mo (mp_KED) | 5.335 ppb | 152,354 cps | 0.1 % |

Sample Summary

Instrument Name: iCAP RQ

Analysis index: 7

Analysis name: M28SnPd 10 ppb 300µL HNO3 22.09.2023 mtr

Analysis started at: 21-Dec-23 13:39:42

User name: THERMOF-6VBH8PN\ICPMS-User

| Category | Concentration average | Concentration RSD |
|---------------|-----------------------|-------------------|
| 52Cr (mp_KED) | 10.606 ppb | 0.5 % |
| 53Cr (mp_KED) | 10.656 ppb | 0.4 % |
| 55Mn (mp_KED) | 10.717 ppb | 0.2 % |
| 56Fe (mp_KED) | 10.274 ppb | 0.3 % |
| 57Fe (mp_KED) | 10.405 ppb | 0.7 % |
| 59Co (mp_KED) | 10.726 ppb | 0.5 % |
| 60Ni (mp_KED) | 10.866 ppb | 0.3 % |
| 61Ni (mp_KED) | 10.918 ppb | 1.5 % |
| 62Ni (mp_KED) | 10.871 ppb | 0.5 % |
| 63Cu (mp_KED) | 10.887 ppb | 0.5 % |
| 65Cu (mp_KED) | 10.947 ppb | 0.6 % |
| 95Mo (mp_KED) | 10.363 ppb | 0.6 % |
| 97Mo (mp_KED) | 10.493 ppb | 0.7 % |

| Category | Concentration average | Intensity average | Intensity RSD |
|---------------|-----------------------|-------------------|---------------|
| 52Cr (mp_KED) | 10.606 ppb | 866,031 cps | 0.5 % |
| 53Cr (mp_KED) | 10.656 ppb | 106,441 cps | 0.4 % |
| 55Mn (mp_KED) | 10.717 ppb | 707,695 cps | 0.2 % |
| 56Fe (mp_KED) | 10.274 ppb | 948,588 cps | 0.3 % |
| 57Fe (mp_KED) | 10.405 ppb | 23,512 cps | 0.7 % |
| 59Co (mp_KED) | 10.726 ppb | 1,248,633 cps | 0.5 % |
| 60Ni (mp_KED) | 10.866 ppb | 297,824 cps | 0.3 % |
| 61Ni (mp_KED) | 10.918 ppb | 13,654 cps | 1.5 % |
| 62Ni (mp_KED) | 10.871 ppb | 45,362 cps | 0.5 % |
| 63Cu (mp_KED) | 10.887 ppb | 796,737 cps | 0.5 % |
| 65Cu (mp_KED) | 10.947 ppb | 390,214 cps | 0.6 % |
| 95Mo (mp_KED) | 10.363 ppb | 459,861 cps | 0.6 % |
| 97Mo (mp_KED) | 10.493 ppb | 298,992 cps | 0.7 % |

Sample Summary

Instrument Name: iCAP RQ

Analysis index: 8

Analysis name: M28SnPd 20 ppb 300µL HNO3 22.09.2023 mtr

Analysis started at: 21-Dec-23 13:44:50

User name: THERMOF-6VBH8PN\ICPMS-User

| Category | Concentration average | Concentration RSD |
|---------------|-----------------------|-------------------|
| 52Cr (mp_KED) | 21.366 ppb | 0.6 % |
| 53Cr (mp_KED) | 21.378 ppb | 0.8 % |
| 55Mn (mp_KED) | 21.594 ppb | 0.7 % |
| 56Fe (mp_KED) | 20.722 ppb | 0.9 % |
| 57Fe (mp_KED) | 20.718 ppb | 1.3 % |
| 59Co (mp_KED) | 21.695 ppb | 0.6 % |
| 60Ni (mp_KED) | 21.737 ppb | 0.7 % |
| 61Ni (mp_KED) | 21.711 ppb | 0.9 % |
| 62Ni (mp_KED) | 21.743 ppb | 0.7 % |
| 63Cu (mp_KED) | 21.844 ppb | 0.6 % |
| 65Cu (mp_KED) | 21.900 ppb | 0.7 % |
| 95Mo (mp_KED) | 20.942 ppb | 0.7 % |
| 97Mo (mp_KED) | 21.113 ppb | 0.8 % |

| Category | Concentration average | Intensity average | Intensity RSD |
|---------------|-----------------------|----------------------|---------------|
| 52Cr (mp_KED) | 21.366 ppb | 1,743,880 cps | 0.6 % |
| 53Cr (mp_KED) | 21.378 ppb | 213,237 cps | 0.8 % |
| 55Mn (mp_KED) | 21.594 ppb | 1,425,701 cps | 0.7 % |
| 56Fe (mp_KED) | 20.722 ppb | 1,890,648 cps | 0.8 % |
| 57Fe (mp_KED) | 20.718 ppb | 46,564 cps | 1.3 % |
| 59Co (mp_KED) | 21.695 ppb | 2,524,999 cps | 0.6 % |
| 60Ni (mp_KED) | 21.737 ppb | 595,165 cps | 0.7 % |
| 61Ni (mp_KED) | 21.711 ppb | 27,128 cps | 0.9 % |
| 62Ni (mp_KED) | 21.743 ppb | 90,628 cps | 0.7 % |
| 63Cu (mp_KED) | 21.844 ppb | 1,594,521 cps | 0.6 % |
| 65Cu (mp_KED) | 21.900 ppb | 778,651 cps | 0.7 % |
| 95Mo (mp_KED) | 20.942 ppb | 928,212 cps | 0.7 % |
| 97Mo (mp_KED) | 21.113 ppb | 600,876 cps | 0.8 % |

Sample Summary

Instrument Name: iCAP RQ

Analysis index: 9

Analysis name: M28SnPd 50 ppb 300µL HNO3 22.09.2023 mtr

Analysis started at: 21-Dec-23 13:49:59

User name: THERMOF-6VBH8PN\ICPMS-User

| Category | Concentration average | Concentration RSD |
|---------------|-----------------------|-------------------|
| 52Cr (mp_KED) | 54.660 ppb | 0.4 % |
| 53Cr (mp_KED) | 54.534 ppb | 0.6 % |
| 55Mn (mp_KED) | 52.064 ppb | 0.5 % |
| 56Fe (mp_KED) | 60.101 ppb | 0.5 % |
| 57Fe (mp_KED) | 59.791 ppb | 0.2 % |
| 59Co (mp_KED) | 51.920 ppb | 0.5 % |
| 60Ni (mp_KED) | 52.475 ppb | 0.2 % |
| 61Ni (mp_KED) | 52.637 ppb | 0.3 % |
| 62Ni (mp_KED) | 52.676 ppb | 0.2 % |
| 63Cu (mp_KED) | 52.324 ppb | 0.4 % |
| 65Cu (mp_KED) | 52.306 ppb | 0.5 % |
| 95Mo (mp_KED) | 51.870 ppb | 0.6 % |
| 97Mo (mp_KED) | 51.803 ppb | 0.5 % |

| Category | Concentration average | Intensity average | Intensity RSD |
|---------------|-----------------------|----------------------|---------------|
| 52Cr (mp_KED) | 54.660 ppb | 4,459,991 cps | 0.4 % |
| 53Cr (mp_KED) | 54.534 ppb | 543,461 cps | 0.6 % |
| 55Mn (mp_KED) | 52.064 ppb | 3,437,030 cps | 0.5 % |
| 56Fe (mp_KED) | 60.101 ppb | 5,441,031 cps | 0.5 % |
| 57Fe (mp_KED) | 59.791 ppb | 133,899 cps | 0.2 % |
| 59Co (mp_KED) | 51.920 ppb | 6,041,770 cps | 0.5 % |
| 60Ni (mp_KED) | 52.475 ppb | 1,435,877 cps | 0.2 % |
| 61Ni (mp_KED) | 52.637 ppb | 65,737 cps | 0.3 % |
| 62Ni (mp_KED) | 52.676 ppb | 219,427 cps | 0.2 % |
| 63Cu (mp_KED) | 52.324 ppb | 3,813,791 cps | 0.4 % |
| 65Cu (mp_KED) | 52.306 ppb | 1,857,031 cps | 0.5 % |
| 95Mo (mp_KED) | 51.870 ppb | 2,297,405 cps | 0.6 % |
| 97Mo (mp_KED) | 51.803 ppb | 1,473,339 cps | 0.5 % |

Sample Summary

Instrument Name: iCAP RQ

Analysis index: 10

Analysis name: M28SnPd 100 ppb 300µL HNO3 22.09.2023 mtr

Analysis started at: 21-Dec-23 13:55:09

User name: THERMOF-6VBH8PN\ICPMS-User

| Category | Concentration average | Concentration RSD |
|---------------|-----------------------|-------------------|
| 52Cr (mp_KED) | 97.313 ppb | 0.3 % |
| 53Cr (mp_KED) | 97.369 ppb | 0.1 % |
| 55Mn (mp_KED) | 98.553 ppb | 0.2 % |
| 56Fe (mp_KED) | 94.764 ppb | 0.0 % |
| 57Fe (mp_KED) | 94.907 ppb | 0.1 % |
| 59Co (mp_KED) | 98.603 ppb | 0.3 % |
| 60Ni (mp_KED) | 98.297 ppb | 0.1 % |
| 61Ni (mp_KED) | 98.216 ppb | 0.3 % |
| 62Ni (mp_KED) | 98.194 ppb | 0.5 % |
| 63Cu (mp_KED) | 98.350 ppb | 0.3 % |
| 65Cu (mp_KED) | 98.340 ppb | 0.1 % |
| 95Mo (mp_KED) | 98.826 ppb | 0.1 % |
| 97Mo (mp_KED) | 98.809 ppb | 0.4 % |

| Category | Concentration average | Intensity average | Intensity RSD |
|---------------|-----------------------|-----------------------|---------------|
| 52Cr (mp_KED) | 97.313 ppb | 7,939,639 cps | 0.3 % |
| 53Cr (mp_KED) | 97.369 ppb | 970,099 cps | 0.1 % |
| 55Mn (mp_KED) | 98.553 ppb | 6,505,764 cps | 0.2 % |
| 56Fe (mp_KED) | 94.764 ppb | 8,566,283 cps | 0.0 % |
| 57Fe (mp_KED) | 94.907 ppb | 212,390 cps | 0.1 % |
| 59Co (mp_KED) | 98.603 ppb | 11,473,621 cps | 0.3 % |
| 60Ni (mp_KED) | 98.297 ppb | 2,689,152 cps | 0.1 % |
| 61Ni (mp_KED) | 98.216 ppb | 122,639 cps | 0.3 % |
| 62Ni (mp_KED) | 98.194 ppb | 408,953 cps | 0.5 % |
| 63Cu (mp_KED) | 98.350 ppb | 7,165,004 cps | 0.3 % |
| 65Cu (mp_KED) | 98.340 ppb | 3,489,667 cps | 0.1 % |
| 95Mo (mp_KED) | 98.826 ppb | 4,376,176 cps | 0.1 % |
| 97Mo (mp_KED) | 98.809 ppb | 2,809,600 cps | 0.4 % |

Sample Summary

Instrument Name: iCAP RQ

Analysis index: 11

Analysis name: M28Ru 10 ppb 1500ml HNO3 in 50ml 27.10.2023 mtr

Analysis started at: 21-Dec-23 14:00:15

User name: THERMOF-6VBH8PN\ICPMS-User

| Category | Concentration average | Concentration RSD |
|---------------|-----------------------|-------------------|
| 52Cr (mp_KED) | 11.432 ppb | 0.5 % |
| 53Cr (mp_KED) | 11.478 ppb | 0.5 % |
| 55Mn (mp_KED) | 10.317 ppb | 0.7 % |
| 56Fe (mp_KED) | 14.381 ppb | 0.3 % |
| 57Fe (mp_KED) | 14.397 ppb | 0.7 % |
| 59Co (mp_KED) | 10.209 ppb | 0.5 % |
| 60Ni (mp_KED) | 10.567 ppb | 0.9 % |
| 61Ni (mp_KED) | 10.613 ppb | 1.0 % |
| 62Ni (mp_KED) | 10.657 ppb | 0.6 % |
| 63Cu (mp_KED) | 10.458 ppb | 0.5 % |
| 65Cu (mp_KED) | 10.514 ppb | 0.5 % |
| 95Mo (mp_KED) | 11.222 ppb | 0.4 % |
| 97Mo (mp_KED) | 11.361 ppb | 0.2 % |

| Category | Concentration average | Intensity average | Intensity RSD |
|---------------|-----------------------|-------------------|---------------|
| 52Cr (mp_KED) | 11.432 ppb | 933,427 cps | 0.5 % |
| 53Cr (mp_KED) | 11.478 ppb | 114,629 cps | 0.5 % |
| 55Mn (mp_KED) | 10.317 ppb | 681,272 cps | 0.7 % |
| 56Fe (mp_KED) | 14.381 ppb | 1,318,886 cps | 0.3 % |
| 57Fe (mp_KED) | 14.397 ppb | 32,435 cps | 0.7 % |
| 59Co (mp_KED) | 10.209 ppb | 1,188,541 cps | 0.5 % |
| 60Ni (mp_KED) | 10.567 ppb | 289,656 cps | 0.9 % |
| 61Ni (mp_KED) | 10.613 ppb | 13,272 cps | 1.0 % |
| 62Ni (mp_KED) | 10.657 ppb | 44,468 cps | 0.6 % |
| 63Cu (mp_KED) | 10.458 ppb | 765,446 cps | 0.5 % |
| 65Cu (mp_KED) | 10.514 ppb | 374,835 cps | 0.5 % |
| 95Mo (mp_KED) | 11.222 ppb | 497,895 cps | 0.4 % |
| 97Mo (mp_KED) | 11.361 ppb | 323,679 cps | 0.2 % |

Sample Summary

Instrument Name: iCAP RQ

Analysis index: 12

Analysis name: Rinse HNO3 2%

Analysis started at: 21-Dec-23 14:05:24

User name: THERMOF-6VBH8PN\ICPMS-User

| Category | Concentration average | Concentration RSD |
|---------------|-----------------------|-------------------|
| 52Cr (mp_KED) | -0.001 ppb | 29.3 % |
| 53Cr (mp_KED) | -0.012 ppb | 20.0 % |
| 55Mn (mp_KED) | 0.006 ppb | 12.1 % |
| 56Fe (mp_KED) | -0.015 ppb | 9.6 % |
| 57Fe (mp_KED) | 0.008 ppb | 178.9 % |
| 59Co (mp_KED) | 0.002 ppb | 17.4 % |
| 60Ni (mp_KED) | 0.008 ppb | 12.7 % |
| 61Ni (mp_KED) | 0.008 ppb | 78.2 % |
| 62Ni (mp_KED) | 0.011 ppb | 36.1 % |
| 63Cu (mp_KED) | 0.014 ppb | 4.0 % |
| 65Cu (mp_KED) | 0.013 ppb | 10.9 % |
| 95Mo (mp_KED) | 0.435 ppb | 2.8 % |
| 97Mo (mp_KED) | 0.443 ppb | 4.4 % |

| Category | Concentration average | Intensity average | Intensity RSD |
|---------------|-----------------------|-------------------|---------------|
| 52Cr (mp_KED) | -0.001 ppb | 740 cps | 2.7 % |
| 53Cr (mp_KED) | -0.012 ppb | 191 cps | 12.3 % |
| 55Mn (mp_KED) | 0.006 ppb | 692 cps | 7.3 % |
| 56Fe (mp_KED) | -0.015 ppb | 20,951 cps | 0.6 % |
| 57Fe (mp_KED) | 0.008 ppb | 273 cps | 11.5 % |
| 59Co (mp_KED) | 0.002 ppb | 806 cps | 4.2 % |
| 60Ni (mp_KED) | 0.008 ppb | 836 cps | 3.2 % |
| 61Ni (mp_KED) | 0.008 ppb | 33 cps | 24.1 % |
| 62Ni (mp_KED) | 0.011 ppb | 142 cps | 11.7 % |
| 63Cu (mp_KED) | 0.014 ppb | 5,036 cps | 0.8 % |
| 65Cu (mp_KED) | 0.013 ppb | 2,423 cps | 2.1 % |
| 95Mo (mp_KED) | 0.435 ppb | 20,353 cps | 2.6 % |
| 97Mo (mp_KED) | 0.443 ppb | 13,293 cps | 4.1 % |

Sample Summary

Instrument Name: iCAP RQ

Analysis index: 13

Analysis name: RZE-001 - 0.1mol/L KOH post OER 5h 10s - 0.1%

Analysis started at: 21-Dec-23 14:10:34

User name: THERMOF-6VBH8PN\ICPMS-User

| Category | Concentration average | Concentration RSD |
|---------------|-----------------------|-------------------|
| 52Cr (mp_KED) | 0.010 ppb | 7.8 % |
| 53Cr (mp_KED) | 0.010 ppb | 19.3 % |
| 55Mn (mp_KED) | 0.006 ppb | 9.0 % |
| 56Fe (mp_KED) | -0.040 ppb | 3.7 % |
| 57Fe (mp_KED) | -0.011 ppb | 60.3 % |
| 59Co (mp_KED) | 0.001 ppb | 14.0 % |
| 60Ni (mp_KED) | -0.002 ppb | 44.2 % |
| 61Ni (mp_KED) | 0.003 ppb | 107.6 % |
| 62Ni (mp_KED) | -0.003 ppb | 86.6 % |
| 63Cu (mp_KED) | -0.025 ppb | 3.4 % |
| 65Cu (mp_KED) | -0.025 ppb | 4.5 % |
| 95Mo (mp_KED) | 0.194 ppb | 7.1 % |
| 97Mo (mp_KED) | 0.198 ppb | 6.0 % |

| Category | Concentration average | Intensity average | Intensity RSD |
|---------------|-----------------------|-------------------|---------------|
| 52Cr (mp_KED) | 0.010 ppb | 1,626 cps | 3.9 % |
| 53Cr (mp_KED) | 0.010 ppb | 404 cps | 4.6 % |
| 55Mn (mp_KED) | 0.006 ppb | 696 cps | 5.5 % |
| 56Fe (mp_KED) | -0.040 ppb | 18,704 cps | 0.7 % |
| 57Fe (mp_KED) | -0.011 ppb | 231 cps | 6.3 % |
| 59Co (mp_KED) | 0.001 ppb | 755 cps | 2.7 % |
| 60Ni (mp_KED) | -0.002 ppb | 568 cps | 4.6 % |
| 61Ni (mp_KED) | 0.003 ppb | 27 cps | 16.8 % |
| 62Ni (mp_KED) | -0.003 ppb | 82 cps | 15.4 % |
| 63Cu (mp_KED) | -0.025 ppb | 2,173 cps | 2.8 % |
| 65Cu (mp_KED) | -0.025 ppb | 1,084 cps | 3.6 % |
| 95Mo (mp_KED) | 0.194 ppb | 9,686 cps | 6.3 % |
| 97Mo (mp_KED) | 0.198 ppb | 6,329 cps | 5.4 % |

Sample Summary

Instrument Name: iCAP RQ

Analysis index: 14

Analysis name: RZE-001 - 0.1mol/L KOH post OER 5h 10s - 1%

Analysis started at: 21-Dec-23 14:15:42

User name: THERMOF-6VBH8PN\ICPMS-User

| Category | Concentration average | Concentration RSD |
|---------------|-----------------------|-------------------|
| 52Cr (mp_KED) | 0.141 ppb | 0.9 % |
| 53Cr (mp_KED) | 0.231 ppb | 2.1 % |
| 55Mn (mp_KED) | 0.073 ppb | 0.6 % |
| 56Fe (mp_KED) | 0.168 ppb | 2.2 % |
| 57Fe (mp_KED) | 0.173 ppb | 5.6 % |
| 59Co (mp_KED) | 0.014 ppb | 4.3 % |
| 60Ni (mp_KED) | 0.023 ppb | 9.5 % |
| 61Ni (mp_KED) | 0.027 ppb | 35.2 % |
| 62Ni (mp_KED) | 0.023 ppb | 13.0 % |
| 63Cu (mp_KED) | 0.037 ppb | 3.5 % |
| 65Cu (mp_KED) | 0.038 ppb | 0.7 % |
| 95Mo (mp_KED) | 1.676 ppb | 0.8 % |
| 97Mo (mp_KED) | 1.691 ppb | 0.7 % |

| Category | Concentration average | Intensity average | Intensity RSD |
|---------------|-----------------------|-------------------|---------------|
| 52Cr (mp_KED) | 0.141 ppb | 12,335 cps | 0.8 % |
| 53Cr (mp_KED) | 0.231 ppb | 2,613 cps | 1.8 % |
| 55Mn (mp_KED) | 0.073 ppb | 5,090 cps | 0.6 % |
| 56Fe (mp_KED) | 0.168 ppb | 37,427 cps | 0.9 % |
| 57Fe (mp_KED) | 0.173 ppb | 642 cps | 3.4 % |
| 59Co (mp_KED) | 0.014 ppb | 2,276 cps | 3.2 % |
| 60Ni (mp_KED) | 0.023 ppb | 1,262 cps | 4.8 % |
| 61Ni (mp_KED) | 0.027 ppb | 57 cps | 20.9 % |
| 62Ni (mp_KED) | 0.023 ppb | 194 cps | 6.6 % |
| 63Cu (mp_KED) | 0.037 ppb | 6,714 cps | 1.4 % |
| 65Cu (mp_KED) | 0.038 ppb | 3,306 cps | 0.3 % |
| 95Mo (mp_KED) | 1.676 ppb | 75,279 cps | 0.8 % |
| 97Mo (mp_KED) | 1.691 ppb | 48,785 cps | 0.7 % |

Sample Summary

Instrument Name: iCAP RQ

Analysis index: 15

Analysis name: RZE-001 - 0.1mol/L KOH post OER 5h 10s - 10%

Analysis started at: 21-Dec-23 14:20:49

User name: THERMOF-6VBH8PN\ICPMS-User

| Category | Concentration average | Concentration RSD |
|---------------|-----------------------|-------------------|
| 52Cr (mp_KED) | 1.619 ppb | 1.1 % |
| 53Cr (mp_KED) | 3.480 ppb | 1.0 % |
| 55Mn (mp_KED) | 0.895 ppb | 0.7 % |
| 56Fe (mp_KED) | 2.221 ppb | 0.4 % |
| 57Fe (mp_KED) | 1.995 ppb | 1.6 % |
| 59Co (mp_KED) | 0.145 ppb | 0.5 % |
| 60Ni (mp_KED) | 0.251 ppb | 0.8 % |
| 61Ni (mp_KED) | 0.264 ppb | 1.0 % |
| 62Ni (mp_KED) | 0.248 ppb | 4.6 % |
| 63Cu (mp_KED) | 0.606 ppb | 1.0 % |
| 65Cu (mp_KED) | 0.615 ppb | 1.7 % |
| 95Mo (mp_KED) | 0.245 ppb | 5.4 % |
| 97Mo (mp_KED) | 0.241 ppb | 4.6 % |

| Category | Concentration average | Intensity average | Intensity RSD |
|---------------|-----------------------|-------------------|---------------|
| 52Cr (mp_KED) | 1.619 ppb | 132,859 cps | 1.1 % |
| 53Cr (mp_KED) | 3.480 ppb | 34,972 cps | 1.0 % |
| 55Mn (mp_KED) | 0.895 ppb | 59,320 cps | 0.7 % |
| 56Fe (mp_KED) | 2.221 ppb | 222,532 cps | 0.3 % |
| 57Fe (mp_KED) | 1.995 ppb | 4,714 cps | 1.6 % |
| 59Co (mp_KED) | 0.145 ppb | 17,439 cps | 0.5 % |
| 60Ni (mp_KED) | 0.251 ppb | 7,482 cps | 0.8 % |
| 61Ni (mp_KED) | 0.264 ppb | 352 cps | 0.9 % |
| 62Ni (mp_KED) | 0.248 ppb | 1,131 cps | 4.2 % |
| 63Cu (mp_KED) | 0.606 ppb | 48,136 cps | 0.9 % |
| 65Cu (mp_KED) | 0.615 ppb | 23,793 cps | 1.5 % |
| 95Mo (mp_KED) | 0.245 ppb | 11,952 cps | 4.9 % |
| 97Mo (mp_KED) | 0.241 ppb | 7,552 cps | 4.2 % |

Sample Summary

Instrument Name: iCAP RQ

Analysis index: 16

Analysis name: RZE-001 - 0.1mol/L KOH post OER 5h 10s - 40%

Analysis started at: 21-Dec-23 14:25:56

User name: THERMOF-6VBH8PN\ICPMS-User

| Category | Concentration average | Concentration RSD |
|---------------|-----------------------|-------------------|
| 52Cr (mp_KED) | 2.210 ppb | 50.6 % |
| 53Cr (mp_KED) | 10.639 ppb | 36.4 % |
| 55Mn (mp_KED) | 1.173 ppb | 58.7 % |
| 56Fe (mp_KED) | 2.042 ppb | 63.5 % |
| 57Fe (mp_KED) | 2.215 ppb | 54.2 % |
| 59Co (mp_KED) | 0.189 ppb | 49.5 % |
| 60Ni (mp_KED) | 0.304 ppb | 46.0 % |
| 61Ni (mp_KED) | 0.332 ppb | 43.2 % |
| 62Ni (mp_KED) | 0.306 ppb | 44.0 % |
| 63Cu (mp_KED) | 0.689 ppb | 43.6 % |
| 65Cu (mp_KED) | 0.699 ppb | 43.7 % |
| 95Mo (mp_KED) | 0.144 ppb | 55.2 % |
| 97Mo (mp_KED) | 0.132 ppb | 56.5 % |

| Category | Concentration average | Intensity average | Intensity RSD |
|---------------|-----------------------|-------------------|---------------|
| 52Cr (mp_KED) | 2.210 ppb | 181,139 cps | 50.4 % |
| 53Cr (mp_KED) | 10.639 ppb | 106,273 cps | 36.3 % |
| 55Mn (mp_KED) | 1.173 ppb | 77,705 cps | 58.5 % |
| 56Fe (mp_KED) | 2.042 ppb | 206,405 cps | 56.7 % |
| 57Fe (mp_KED) | 2.215 ppb | 5,207 cps | 51.5 % |
| 59Co (mp_KED) | 0.189 ppb | 22,631 cps | 48.2 % |
| 60Ni (mp_KED) | 0.304 ppb | 8,931 cps | 42.8 % |
| 61Ni (mp_KED) | 0.332 ppb | 437 cps | 40.9 % |
| 62Ni (mp_KED) | 0.306 ppb | 1,369 cps | 40.9 % |
| 63Cu (mp_KED) | 0.689 ppb | 54,207 cps | 40.4 % |
| 65Cu (mp_KED) | 0.699 ppb | 26,738 cps | 40.5 % |
| 95Mo (mp_KED) | 0.144 ppb | 7,474 cps | 47.2 % |
| 97Mo (mp_KED) | 0.132 ppb | 4,454 cps | 47.6 % |

Sample Summary

Instrument Name: iCAP RQ

Analysis index: 17

Analysis name: Rinse HNO3 2%

Analysis started at: 21-Dec-23 14:31:05

User name: THERMOF-6VBH8PN\ICPMS-User

| Category | Concentration average | Concentration RSD |
|---------------|-----------------------|-------------------|
| 52Cr (mp_KED) | -0.001 ppb | 24.7 % |
| 53Cr (mp_KED) | 0.093 ppb | 3.9 % |
| 55Mn (mp_KED) | 0.007 ppb | 4.2 % |
| 56Fe (mp_KED) | 0.094 ppb | 2.7 % |
| 57Fe (mp_KED) | 0.103 ppb | 61.9 % |
| 59Co (mp_KED) | 0.002 ppb | 16.8 % |
| 60Ni (mp_KED) | 0.012 ppb | 17.1 % |
| 61Ni (mp_KED) | 0.017 ppb | 32.8 % |
| 62Ni (mp_KED) | 0.012 ppb | 25.6 % |
| 63Cu (mp_KED) | 0.068 ppb | 1.7 % |
| 65Cu (mp_KED) | 0.067 ppb | 2.7 % |
| 95Mo (mp_KED) | 0.068 ppb | 11.5 % |
| 97Mo (mp_KED) | 0.067 ppb | 13.2 % |

| Category | Concentration average | Intensity average | Intensity RSD |
|---------------|-----------------------|-------------------|---------------|
| 52Cr (mp_KED) | -0.001 ppb | 698 cps | 3.9 % |
| 53Cr (mp_KED) | 0.093 ppb | 1,239 cps | 2.9 % |
| 55Mn (mp_KED) | 0.007 ppb | 762 cps | 2.7 % |
| 56Fe (mp_KED) | 0.094 ppb | 30,738 cps | 0.7 % |
| 57Fe (mp_KED) | 0.103 ppb | 486 cps | 29.4 % |
| 59Co (mp_KED) | 0.002 ppb | 896 cps | 5.4 % |
| 60Ni (mp_KED) | 0.012 ppb | 957 cps | 5.9 % |
| 61Ni (mp_KED) | 0.017 ppb | 45 cps | 15.8 % |
| 62Ni (mp_KED) | 0.012 ppb | 146 cps | 8.8 % |
| 63Cu (mp_KED) | 0.068 ppb | 8,991 cps | 1.0 % |
| 65Cu (mp_KED) | 0.067 ppb | 4,348 cps | 1.5 % |
| 95Mo (mp_KED) | 0.068 ppb | 4,088 cps | 8.5 % |
| 97Mo (mp_KED) | 0.067 ppb | 2,615 cps | 9.6 % |

Sample Summary

Instrument Name: iCAP RQ

Analysis index: 18

Analysis name: 548 Moleculite-MnCu-7.88mg-Timothy Oppotsch - 0.01%

Analysis started at: 21-Dec-23 14:36:11

User name: THERMOF-6VBH8PN\ICPMS-User

| Category | Concentration average | Concentration RSD |
|---------------|-----------------------|-------------------|
| 52Cr (mp_KED) | -0.001 ppb | 103.7 % |
| 53Cr (mp_KED) | 0.060 ppb | 7.9 % |
| 55Mn (mp_KED) | 32.119 ppb | 0.7 % |
| 56Fe (mp_KED) | 0.790 ppb | 1.4 % |
| 57Fe (mp_KED) | 0.790 ppb | 6.6 % |
| 59Co (mp_KED) | 0.009 ppb | 6.3 % |
| 60Ni (mp_KED) | 0.127 ppb | 0.9 % |
| 61Ni (mp_KED) | 0.139 ppb | 7.0 % |
| 62Ni (mp_KED) | 0.125 ppb | 5.8 % |
| 63Cu (mp_KED) | 19.477 ppb | 0.8 % |
| 65Cu (mp_KED) | 19.554 ppb | 0.7 % |
| 95Mo (mp_KED) | 0.063 ppb | 13.6 % |
| 97Mo (mp_KED) | 0.065 ppb | 8.9 % |

| Category | Concentration average | Intensity average | Intensity RSD |
|---------------|-----------------------|----------------------|---------------|
| 52Cr (mp_KED) | -0.001 ppb | 766 cps | 5.7 % |
| 53Cr (mp_KED) | 0.060 ppb | 903 cps | 5.2 % |
| 55Mn (mp_KED) | 32.119 ppb | 2,120,441 cps | 0.7 % |
| 56Fe (mp_KED) | 0.790 ppb | 93,547 cps | 1.1 % |
| 57Fe (mp_KED) | 0.790 ppb | 2,021 cps | 5.8 % |
| 59Co (mp_KED) | 0.009 ppb | 1,643 cps | 4.0 % |
| 60Ni (mp_KED) | 0.127 ppb | 4,109 cps | 0.8 % |
| 61Ni (mp_KED) | 0.139 ppb | 196 cps | 6.1 % |
| 62Ni (mp_KED) | 0.125 ppb | 616 cps | 4.9 % |
| 63Cu (mp_KED) | 19.477 ppb | 1,422,175 cps | 0.8 % |
| 65Cu (mp_KED) | 19.554 ppb | 695,476 cps | 0.7 % |
| 95Mo (mp_KED) | 0.063 ppb | 3,887 cps | 9.8 % |
| 97Mo (mp_KED) | 0.065 ppb | 2,560 cps | 6.5 % |

Sample Summary

Instrument Name: iCAP RQ

Analysis index: 19

Analysis name: 548 Moleculite-MnCu-7.88mg-Timothy Oppotsch - 0.1%

Analysis started at: 21-Dec-23 14:41:17

User name: THERMOF-6VBH8PN\ICPMS-User

| Category | Concentration average | Concentration RSD |
|---------------|-----------------------|-------------------|
| 52Cr (mp_KED) | 0.020 ppb | 5.8 % |
| 53Cr (mp_KED) | 0.060 ppb | 5.6 % |
| 55Mn (mp_KED) | 316.521 ppb | 0.2 % |
| 56Fe (mp_KED) | 3.136 ppb | 0.5 % |
| 57Fe (mp_KED) | 3.117 ppb | 1.3 % |
| 59Co (mp_KED) | 0.088 ppb | 1.3 % |
| 60Ni (mp_KED) | 1.270 ppb | 0.8 % |
| 61Ni (mp_KED) | 1.262 ppb | 2.8 % |
| 62Ni (mp_KED) | 1.262 ppb | 0.2 % |
| 63Cu (mp_KED) | 196.345 ppb | 0.3 % |
| 65Cu (mp_KED) | 194.285 ppb | 0.4 % |
| 95Mo (mp_KED) | 1.805 ppb | 0.4 % |
| 97Mo (mp_KED) | 1.821 ppb | 0.7 % |

| Category | Concentration average | Intensity average | Intensity RSD |
|---------------|-----------------------|-----------------------|---------------|
| 52Cr (mp_KED) | 0.020 ppb | 2,425 cps | 3.9 % |
| 53Cr (mp_KED) | 0.060 ppb | 909 cps | 3.7 % |
| 55Mn (mp_KED) | 316.521 ppb | 20,893,835 cps | 0.2 % |
| 56Fe (mp_KED) | 3.136 ppb | 305,049 cps | 0.4 % |
| 57Fe (mp_KED) | 3.117 ppb | 7,222 cps | 1.3 % |
| 59Co (mp_KED) | 0.088 ppb | 10,807 cps | 1.2 % |
| 60Ni (mp_KED) | 1.270 ppb | 35,363 cps | 0.8 % |
| 61Ni (mp_KED) | 1.262 ppb | 1,599 cps | 2.8 % |
| 62Ni (mp_KED) | 1.262 ppb | 5,350 cps | 0.2 % |
| 63Cu (mp_KED) | 196.345 ppb | 14,300,148 cps | 0.3 % |
| 65Cu (mp_KED) | 194.285 ppb | 6,892,387 cps | 0.4 % |
| 95Mo (mp_KED) | 1.805 ppb | 80,984 cps | 0.4 % |
| 97Mo (mp_KED) | 1.821 ppb | 52,481 cps | 0.7 % |

Sample Summary

Instrument Name: iCAP RQ

Analysis index: 20

Analysis name: 548 Moleculite-MnCu-7.88mg-Timothy Oppotsch - 1%

Analysis started at: 21-Dec-23 14:46:24

User name: THERMOF-6VBH8PN\ICPMS-User

| Category | Concentration average | Concentration RSD |
|---------------|-----------------------|-------------------|
| 52Cr (mp_KED) | 0.148 ppb | 0.3 % |
| 53Cr (mp_KED) | 0.171 ppb | 3.4 % |
| 55Mn (mp_KED) | 3,060.309 ppb | 1.5 % |
| 56Fe (mp_KED) | 28.124 ppb | 1.0 % |
| 57Fe (mp_KED) | 28.060 ppb | 1.1 % |
| 59Co (mp_KED) | 0.866 ppb | 0.7 % |
| 60Ni (mp_KED) | 12.211 ppb | 0.9 % |
| 61Ni (mp_KED) | 12.250 ppb | 0.5 % |
| 62Ni (mp_KED) | 12.255 ppb | 0.4 % |
| 63Cu (mp_KED) | 1,867.394 ppb | 1.1 % |
| 65Cu (mp_KED) | 1,854.366 ppb | 1.1 % |
| 95Mo (mp_KED) | 0.063 ppb | 8.2 % |
| 97Mo (mp_KED) | 0.063 ppb | 8.4 % |

| Category | Concentration average | Intensity average | Intensity RSD |
|---------------|-----------------------|------------------------|---------------|
| 52Cr (mp_KED) | 0.148 ppb | 12,919 cps | 0.3 % |
| 53Cr (mp_KED) | 0.171 ppb | 2,008 cps | 2.8 % |
| 55Mn (mp_KED) | 3,060.309 ppb | 202,011,347 cps | 1.5 % |
| 56Fe (mp_KED) | 28.124 ppb | 2,558,022 cps | 1.0 % |
| 57Fe (mp_KED) | 28.060 ppb | 62,976 cps | 1.0 % |
| 59Co (mp_KED) | 0.866 ppb | 101,349 cps | 0.7 % |
| 60Ni (mp_KED) | 12.211 ppb | 334,612 cps | 0.9 % |
| 61Ni (mp_KED) | 12.250 ppb | 15,316 cps | 0.5 % |
| 62Ni (mp_KED) | 12.255 ppb | 51,121 cps | 0.4 % |
| 63Cu (mp_KED) | 1,867.394 ppb | 135,971,456 cps | 1.1 % |
| 65Cu (mp_KED) | 1,854.366 ppb | 65,768,213 cps | 1.1 % |
| 95Mo (mp_KED) | 0.063 ppb | 3,867 cps | 5.9 % |
| 97Mo (mp_KED) | 0.063 ppb | 2,479 cps | 6.0 % |

Sample Summary

Instrument Name: iCAP RQ

Analysis index: 21

Analysis name: Rinse HNO3 2%

Analysis started at: 21-Dec-23 14:51:32

User name: THERMOF-6VBH8PN\ICPMS-User

| Category | Concentration average | Concentration RSD |
|---------------|-----------------------|-------------------|
| 52Cr (mp_KED) | -0.003 ppb | 16.5 % |
| 53Cr (mp_KED) | 0.011 ppb | 10.5 % |
| 55Mn (mp_KED) | 0.124 ppb | 6.5 % |
| 56Fe (mp_KED) | 0.029 ppb | 17.1 % |
| 57Fe (mp_KED) | 0.067 ppb | 101.2 % |
| 59Co (mp_KED) | -0.001 ppb | 27.9 % |
| 60Ni (mp_KED) | 0.008 ppb | 19.8 % |
| 61Ni (mp_KED) | 0.012 ppb | 38.0 % |
| 62Ni (mp_KED) | 0.006 ppb | 57.7 % |
| 63Cu (mp_KED) | 0.151 ppb | 6.0 % |
| 65Cu (mp_KED) | 0.153 ppb | 6.4 % |
| 95Mo (mp_KED) | 0.041 ppb | 13.9 % |
| 97Mo (mp_KED) | 0.042 ppb | 18.4 % |

| Category | Concentration average | Intensity average | Intensity RSD |
|---------------|-----------------------|-------------------|---------------|
| 52Cr (mp_KED) | -0.003 ppb | 539 cps | 8.3 % |
| 53Cr (mp_KED) | 0.011 ppb | 421 cps | 2.8 % |
| 55Mn (mp_KED) | 0.124 ppb | 8,489 cps | 6.3 % |
| 56Fe (mp_KED) | 0.029 ppb | 24,937 cps | 1.8 % |
| 57Fe (mp_KED) | 0.067 ppb | 404 cps | 37.3 % |
| 59Co (mp_KED) | -0.001 ppb | 528 cps | 4.3 % |
| 60Ni (mp_KED) | 0.008 ppb | 838 cps | 5.0 % |
| 61Ni (mp_KED) | 0.012 ppb | 38 cps | 14.7 % |
| 62Ni (mp_KED) | 0.006 ppb | 120 cps | 11.5 % |
| 63Cu (mp_KED) | 0.151 ppb | 15,005 cps | 4.4 % |
| 65Cu (mp_KED) | 0.153 ppb | 7,388 cps | 4.7 % |
| 95Mo (mp_KED) | 0.041 ppb | 2,922 cps | 8.7 % |
| 97Mo (mp_KED) | 0.042 ppb | 1,886 cps | 11.6 % |

Sample Summary

Instrument Name: iCAP RQ

Analysis index: 22

Analysis name: Blind1 - Aufschluss -10%

Analysis started at: 21-Dec-23 14:56:38

User name: THERMOF-6VBH8PN\ICPMS-User

| Category | Concentration average | Concentration RSD |
|---------------|-----------------------|-------------------|
| 52Cr (mp_KED) | 0.124 ppb | 1.1 % |
| 53Cr (mp_KED) | 0.134 ppb | 2.2 % |
| 55Mn (mp_KED) | 0.027 ppb | 3.9 % |
| 56Fe (mp_KED) | 0.262 ppb | 1.2 % |
| 57Fe (mp_KED) | 0.271 ppb | 4.2 % |
| 59Co (mp_KED) | 0.003 ppb | 5.4 % |
| 60Ni (mp_KED) | 0.199 ppb | 2.2 % |
| 61Ni (mp_KED) | 0.199 ppb | 3.9 % |
| 62Ni (mp_KED) | 0.197 ppb | 3.3 % |
| 63Cu (mp_KED) | 0.069 ppb | 2.8 % |
| 65Cu (mp_KED) | 0.069 ppb | 1.8 % |
| 95Mo (mp_KED) | 0.042 ppb | 10.4 % |
| 97Mo (mp_KED) | 0.042 ppb | 12.0 % |

| Category | Concentration average | Intensity average | Intensity RSD |
|---------------|-----------------------|-------------------|---------------|
| 52Cr (mp_KED) | 0.124 ppb | 10,940 cps | 1.0 % |
| 53Cr (mp_KED) | 0.134 ppb | 1,646 cps | 1.8 % |
| 55Mn (mp_KED) | 0.027 ppb | 2,039 cps | 3.4 % |
| 56Fe (mp_KED) | 0.262 ppb | 45,888 cps | 0.6 % |
| 57Fe (mp_KED) | 0.271 ppb | 861 cps | 3.0 % |
| 59Co (mp_KED) | 0.003 ppb | 997 cps | 2.1 % |
| 60Ni (mp_KED) | 0.199 ppb | 6,076 cps | 1.9 % |
| 61Ni (mp_KED) | 0.199 ppb | 272 cps | 3.6 % |
| 62Ni (mp_KED) | 0.197 ppb | 915 cps | 3.0 % |
| 63Cu (mp_KED) | 0.069 ppb | 9,062 cps | 1.6 % |
| 65Cu (mp_KED) | 0.069 ppb | 4,420 cps | 1.0 % |
| 95Mo (mp_KED) | 0.042 ppb | 2,927 cps | 6.5 % |
| 97Mo (mp_KED) | 0.042 ppb | 1,907 cps | 7.6 % |

Sample Summary

Instrument Name: iCAP RQ

Analysis index: 23

Analysis name: Blind2 - Aufschluss -10%

Analysis started at: 21-Dec-23 15:01:48

User name: THERMOF-6VBH8PN\ICPMS-User

| Category | Concentration average | Concentration RSD |
|---------------|-----------------------|-------------------|
| 52Cr (mp_KED) | 1.035 ppb | 0.8 % |
| 53Cr (mp_KED) | 1.054 ppb | 1.4 % |
| 55Mn (mp_KED) | 0.049 ppb | 2.1 % |
| 56Fe (mp_KED) | 3.734 ppb | 0.5 % |
| 57Fe (mp_KED) | 3.700 ppb | 1.3 % |
| 59Co (mp_KED) | 0.015 ppb | 2.1 % |
| 60Ni (mp_KED) | 0.819 ppb | 1.3 % |
| 61Ni (mp_KED) | 0.807 ppb | 3.3 % |
| 62Ni (mp_KED) | 0.810 ppb | 2.4 % |
| 63Cu (mp_KED) | 0.063 ppb | 3.1 % |
| 65Cu (mp_KED) | 0.064 ppb | 2.6 % |
| 95Mo (mp_KED) | 0.242 ppb | 1.9 % |
| 97Mo (mp_KED) | 0.247 ppb | 3.0 % |

| Category | Concentration average | Intensity average | Intensity RSD |
|---------------|-----------------------|-------------------|---------------|
| 52Cr (mp_KED) | 1.035 ppb | 85,283 cps | 0.8 % |
| 53Cr (mp_KED) | 1.054 ppb | 10,807 cps | 1.4 % |
| 55Mn (mp_KED) | 0.049 ppb | 3,528 cps | 1.9 % |
| 56Fe (mp_KED) | 3.734 ppb | 358,963 cps | 0.5 % |
| 57Fe (mp_KED) | 3.700 ppb | 8,524 cps | 1.3 % |
| 59Co (mp_KED) | 0.015 ppb | 2,330 cps | 1.6 % |
| 60Ni (mp_KED) | 0.819 ppb | 23,041 cps | 1.3 % |
| 61Ni (mp_KED) | 0.807 ppb | 1,030 cps | 3.2 % |
| 62Ni (mp_KED) | 0.810 ppb | 3,467 cps | 2.3 % |
| 63Cu (mp_KED) | 0.063 ppb | 8,625 cps | 1.7 % |
| 65Cu (mp_KED) | 0.064 ppb | 4,227 cps | 1.4 % |
| 95Mo (mp_KED) | 0.242 ppb | 11,800 cps | 1.7 % |
| 97Mo (mp_KED) | 0.247 ppb | 7,725 cps | 2.7 % |

Sample Summary

Instrument Name: iCAP RQ

Analysis index: 25

Analysis name: Rinse HNO3 2%

Analysis started at: 21-Dec-23 15:12:05

User name: THERMOF-6VBH8PN\ICPMS-User

| Category | Concentration average | Concentration RSD |
|---------------|-----------------------|-------------------|
| 52Cr (mp_KED) | 0.001 ppb | 58.4 % |
| 53Cr (mp_KED) | 0.007 ppb | 39.9 % |
| 55Mn (mp_KED) | 0.013 ppb | 1.3 % |
| 56Fe (mp_KED) | 0.019 ppb | 13.4 % |
| 57Fe (mp_KED) | 0.019 ppb | 28.1 % |
| 59Co (mp_KED) | -0.001 ppb | 9.3 % |
| 60Ni (mp_KED) | 0.006 ppb | 23.9 % |
| 61Ni (mp_KED) | 0.014 ppb | 29.0 % |
| 62Ni (mp_KED) | 0.008 ppb | 35.2 % |
| 63Cu (mp_KED) | 0.027 ppb | 2.8 % |
| 65Cu (mp_KED) | 0.026 ppb | 4.9 % |
| 95Mo (mp_KED) | 0.025 ppb | 13.5 % |
| 97Mo (mp_KED) | 0.025 ppb | 9.3 % |

| Category | Concentration average | Intensity average | Intensity RSD |
|---------------|-----------------------|-------------------|---------------|
| 52Cr (mp_KED) | 0.001 ppb | 912 cps | 6.7 % |
| 53Cr (mp_KED) | 0.007 ppb | 374 cps | 7.0 % |
| 55Mn (mp_KED) | 0.013 ppb | 1,133 cps | 1.0 % |
| 56Fe (mp_KED) | 0.019 ppb | 24,047 cps | 1.0 % |
| 57Fe (mp_KED) | 0.019 ppb | 297 cps | 4.0 % |
| 59Co (mp_KED) | -0.001 ppb | 439 cps | 3.6 % |
| 60Ni (mp_KED) | 0.006 ppb | 800 cps | 5.1 % |
| 61Ni (mp_KED) | 0.014 ppb | 41 cps | 12.5 % |
| 62Ni (mp_KED) | 0.008 ppb | 128 cps | 8.6 % |
| 63Cu (mp_KED) | 0.027 ppb | 5,999 cps | 0.9 % |
| 65Cu (mp_KED) | 0.026 ppb | 2,900 cps | 1.6 % |
| 95Mo (mp_KED) | 0.025 ppb | 2,198 cps | 6.8 % |
| 97Mo (mp_KED) | 0.025 ppb | 1,410 cps | 4.7 % |

Sample Summary

Instrument Name: iCAP RQ

Analysis index: 26

Analysis name: M28Ru 10 ppb 1500ml HNO3 in 50ml 27.10.2023 mtr

Analysis started at: 21-Dec-23 15:17:11

User name: THERMOF-6VBH8PN\ICPMS-User

| Category | Concentration average | Concentration RSD |
|---------------|-----------------------|-------------------|
| 52Cr (mp_KED) | 12.883 ppb | 0.6 % |
| 53Cr (mp_KED) | 12.858 ppb | 0.6 % |
| 55Mn (mp_KED) | 11.591 ppb | 0.3 % |
| 56Fe (mp_KED) | 16.158 ppb | 0.3 % |
| 57Fe (mp_KED) | 16.192 ppb | 0.6 % |
| 59Co (mp_KED) | 11.429 ppb | 0.7 % |
| 60Ni (mp_KED) | 11.805 ppb | 0.6 % |
| 61Ni (mp_KED) | 11.795 ppb | 0.7 % |
| 62Ni (mp_KED) | 11.847 ppb | 1.1 % |
| 63Cu (mp_KED) | 11.671 ppb | 0.5 % |
| 65Cu (mp_KED) | 11.720 ppb | 0.6 % |
| 95Mo (mp_KED) | 11.141 ppb | 0.7 % |
| 97Mo (mp_KED) | 11.218 ppb | 0.7 % |

| Category | Concentration average | Intensity average | Intensity RSD |
|---------------|-----------------------|-------------------|---------------|
| 52Cr (mp_KED) | 12.883 ppb | 1,051,838 cps | 0.6 % |
| 53Cr (mp_KED) | 12.858 ppb | 128,374 cps | 0.6 % |
| 55Mn (mp_KED) | 11.591 ppb | 765,422 cps | 0.3 % |
| 56Fe (mp_KED) | 16.158 ppb | 1,479,161 cps | 0.3 % |
| 57Fe (mp_KED) | 16.192 ppb | 36,448 cps | 0.6 % |
| 59Co (mp_KED) | 11.429 ppb | 1,330,482 cps | 0.7 % |
| 60Ni (mp_KED) | 11.805 ppb | 323,501 cps | 0.6 % |
| 61Ni (mp_KED) | 11.795 ppb | 14,749 cps | 0.7 % |
| 62Ni (mp_KED) | 11.847 ppb | 49,423 cps | 1.1 % |
| 63Cu (mp_KED) | 11.671 ppb | 853,819 cps | 0.5 % |
| 65Cu (mp_KED) | 11.720 ppb | 417,639 cps | 0.6 % |
| 95Mo (mp_KED) | 11.141 ppb | 494,325 cps | 0.7 % |
| 97Mo (mp_KED) | 11.218 ppb | 319,604 cps | 0.7 % |

Sample Summary

Instrument Name: iCAP RQ

Analysis index: 27

Analysis name: Rinse HNO3 2%

Analysis started at: 21-Dec-23 15:22:21

User name: THERMOF-6VBH8PN\ICPMS-User

| Category | Concentration average | Concentration RSD |
|---------------|-----------------------|-------------------|
| 52Cr (mp_KED) | -0.002 ppb | 25.2 % |
| 53Cr (mp_KED) | 0.002 ppb | 100.7 % |
| 55Mn (mp_KED) | 0.012 ppb | 5.2 % |
| 56Fe (mp_KED) | 0.023 ppb | 4.5 % |
| 57Fe (mp_KED) | 0.026 ppb | 42.1 % |
| 59Co (mp_KED) | -0.002 ppb | 7.8 % |
| 60Ni (mp_KED) | 0.008 ppb | 9.6 % |
| 61Ni (mp_KED) | 0.013 ppb | 8.8 % |
| 62Ni (mp_KED) | 0.006 ppb | 29.3 % |
| 63Cu (mp_KED) | 0.026 ppb | 5.3 % |
| 65Cu (mp_KED) | 0.025 ppb | 3.0 % |
| 95Mo (mp_KED) | 0.134 ppb | 4.6 % |
| 97Mo (mp_KED) | 0.133 ppb | 4.8 % |

| Category | Concentration average | Intensity average | Intensity RSD |
|---------------|-----------------------|-------------------|---------------|
| 52Cr (mp_KED) | -0.002 ppb | 652 cps | 6.0 % |
| 53Cr (mp_KED) | 0.002 ppb | 330 cps | 6.6 % |
| 55Mn (mp_KED) | 0.012 ppb | 1,089 cps | 3.9 % |
| 56Fe (mp_KED) | 0.023 ppb | 24,341 cps | 0.4 % |
| 57Fe (mp_KED) | 0.026 ppb | 314 cps | 7.8 % |
| 59Co (mp_KED) | -0.002 ppb | 406 cps | 3.9 % |
| 60Ni (mp_KED) | 0.008 ppb | 845 cps | 2.5 % |
| 61Ni (mp_KED) | 0.013 ppb | 39 cps | 3.6 % |
| 62Ni (mp_KED) | 0.006 ppb | 121 cps | 6.0 % |
| 63Cu (mp_KED) | 0.026 ppb | 5,891 cps | 1.7 % |
| 65Cu (mp_KED) | 0.025 ppb | 2,843 cps | 0.9 % |
| 95Mo (mp_KED) | 0.134 ppb | 7,019 cps | 3.9 % |
| 97Mo (mp_KED) | 0.133 ppb | 4,493 cps | 4.0 % |

Sample Summary

Instrument Name: iCAP RQ

Analysis index: 28

Analysis name: pure water

Analysis started at: 21-Dec-23 15:27:28

User name: THERMOF-6VBH8PN\ICPMS-User

| Category | Concentration average | Concentration RSD |
|---------------|-----------------------|-------------------|
| 52Cr (mp_KED) | -0.006 ppb | 1.6 % |
| 53Cr (mp_KED) | -0.002 ppb | 80.3 % |
| 55Mn (mp_KED) | 0.081 ppb | 0.4 % |
| 56Fe (mp_KED) | -0.082 ppb | 5.6 % |
| 57Fe (mp_KED) | -0.066 ppb | 8.0 % |
| 59Co (mp_KED) | -0.002 ppb | 9.3 % |
| 60Ni (mp_KED) | 0.851 ppb | 1.8 % |
| 61Ni (mp_KED) | 0.870 ppb | 1.8 % |
| 62Ni (mp_KED) | 0.839 ppb | 1.3 % |
| 63Cu (mp_KED) | 0.274 ppb | 1.7 % |
| 65Cu (mp_KED) | 0.274 ppb | 2.7 % |
| 95Mo (mp_KED) | 0.008 ppb | 17.0 % |
| 97Mo (mp_KED) | 0.009 ppb | 12.2 % |

| Category | Concentration average | Intensity average | Intensity RSD |
|---------------|-----------------------|-------------------|---------------|
| 52Cr (mp_KED) | -0.006 ppb | 355 cps | 2.0 % |
| 53Cr (mp_KED) | -0.002 ppb | 286 cps | 6.2 % |
| 55Mn (mp_KED) | 0.081 ppb | 5,616 cps | 0.4 % |
| 56Fe (mp_KED) | -0.082 ppb | 14,933 cps | 2.8 % |
| 57Fe (mp_KED) | -0.066 ppb | 107 cps | 11.2 % |
| 59Co (mp_KED) | -0.002 ppb | 366 cps | 6.2 % |
| 60Ni (mp_KED) | 0.851 ppb | 23,896 cps | 1.8 % |
| 61Ni (mp_KED) | 0.870 ppb | 1,109 cps | 1.7 % |
| 62Ni (mp_KED) | 0.839 ppb | 3,588 cps | 1.3 % |
| 63Cu (mp_KED) | 0.274 ppb | 23,966 cps | 1.4 % |
| 65Cu (mp_KED) | 0.274 ppb | 11,668 cps | 2.3 % |
| 95Mo (mp_KED) | 0.008 ppb | 1,454 cps | 4.3 % |
| 97Mo (mp_KED) | 0.009 ppb | 949 cps | 3.2 % |