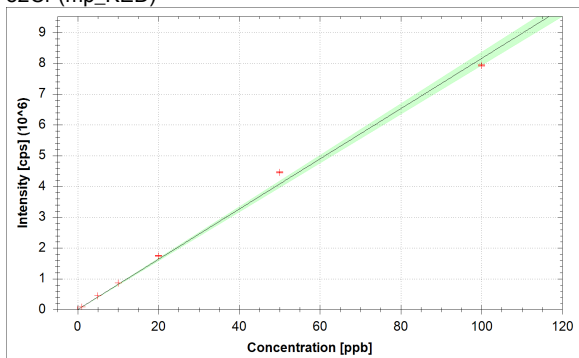


Calibration Curves:

Instrument Name	Serial Number
iCAP RQ	Undefined

LabBook	LabBook Path
2023_12_21_M94_CrMnFeCoNiCu_SGoe-mtr.imexp	_Application Data\Workspace\LabBooks

52Cr (mp_KED)



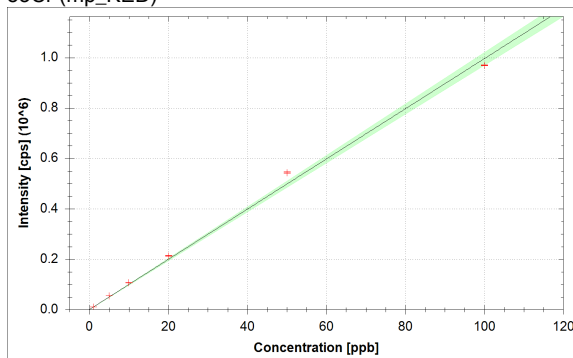
$$f(x) = 81580.5660 \cdot x + 808.0295$$

$$R^2 = 0.9963$$

$$\text{BEC} = 0.010 \text{ ppb}$$

$$\text{LoD} = 0.0018 \text{ ppb}$$

53Cr (mp_KED)



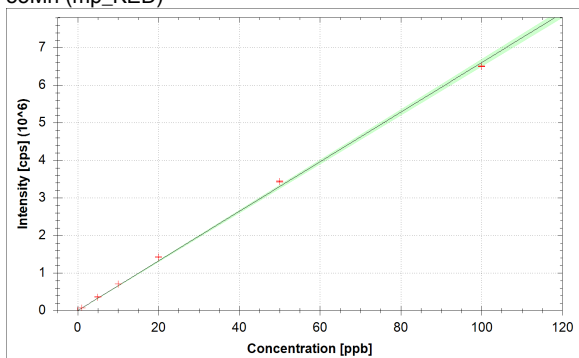
$$f(x) = 9959.9728 \cdot x + 308.2552$$

$$R^2 = 0.9965$$

$$\text{BEC} = 0.031 \text{ ppb}$$

$$\text{LoD} = 0.0084 \text{ ppb}$$

55Mn (mp_KED)



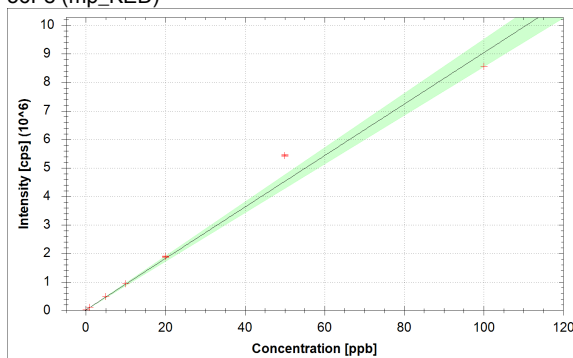
$$f(x) = 66010.0318 \cdot x + 271.0042$$

$$R^2 = 0.9989$$

$$\text{BEC} = 0.004 \text{ ppb}$$

$$\text{LoD} = 0.0010 \text{ ppb}$$

56Fe (mp_KED)



$$f(x) = 90161.0621 \cdot x + 22299.2653$$

$$R^2 = 0.9848$$

$$\text{BEC} = 0.247 \text{ ppb}$$

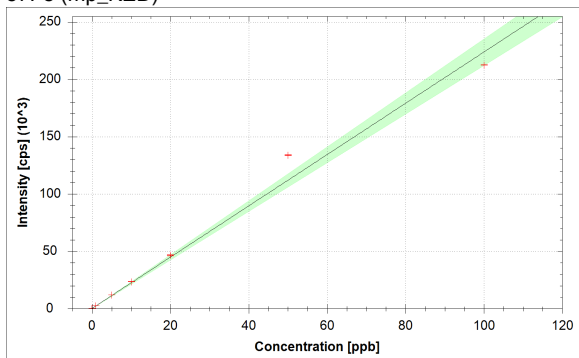
$$\text{LoD} = 0.0122 \text{ ppb}$$

Calibration

21-Dec-23 17:14:30



57Fe (mp_KED)



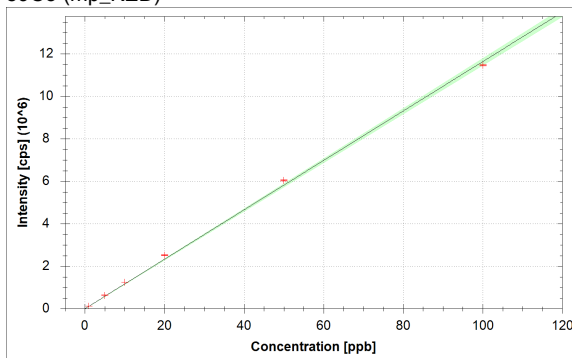
$$f(x) = 2235.1954 \cdot x + 255.2536$$

$$R^2 = 0.9856$$

$$\text{BEC} = 0.114 \text{ ppb}$$

$$\text{LoD} = 0.0055 \text{ ppb}$$

59Co (mp_KED)



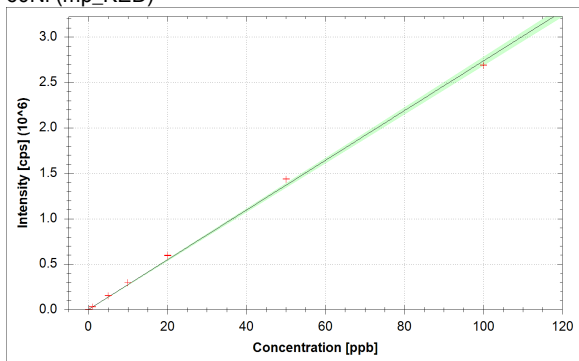
$$f(x) = 116355.5456 \cdot x + 609.2677$$

$$R^2 = 0.9989$$

$$\text{BEC} = 0.005 \text{ ppb}$$

$$\text{LoD} = 0.0009 \text{ ppb}$$

60Ni (mp_KED)



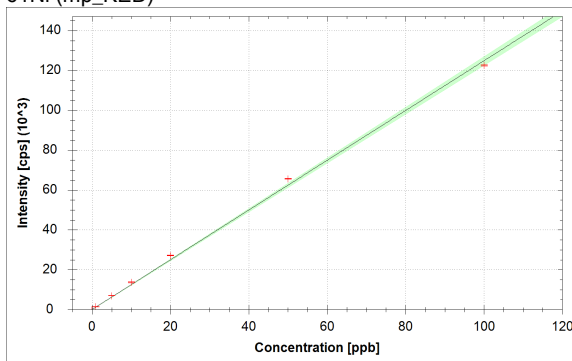
$$f(x) = 27350.9581 \cdot x + 627.2684$$

$$R^2 = 0.9985$$

$$\text{BEC} = 0.023 \text{ ppb}$$

$$\text{LoD} = 0.0030 \text{ ppb}$$

61Ni (mp_KED)



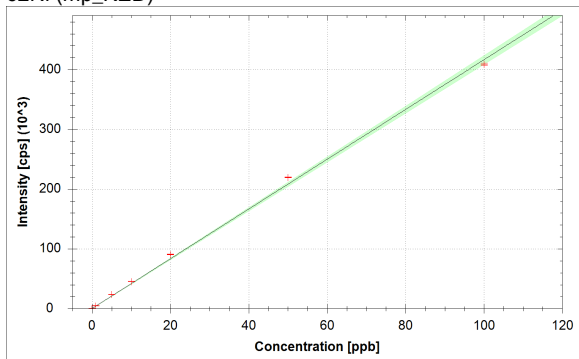
$$f(x) = 1248.4418 \cdot x + 23.0001$$

$$R^2 = 0.9983$$

$$\text{BEC} = 0.018 \text{ ppb}$$

$$\text{LoD} = 0.0092 \text{ ppb}$$

62Ni (mp_KED)



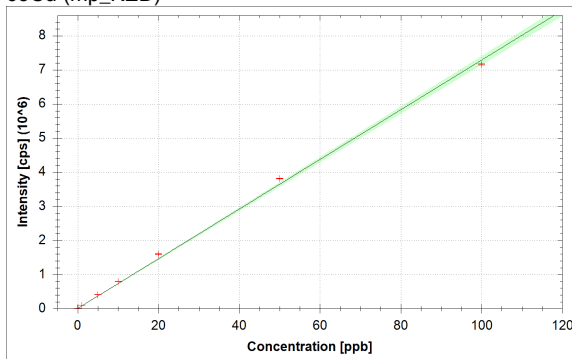
$$f(x) = 4163.7649 \cdot x + 96.2508$$

$$R^2 = 0.9983$$

$$\text{BEC} = 0.023 \text{ ppb}$$

$$\text{LoD} = 0.0106 \text{ ppb}$$

63Cu (mp_KED)



$$f(x) = 72811.3189 \cdot x + 4003.9102$$

$$R^2 = 0.9985$$

$$\text{BEC} = 0.055 \text{ ppb}$$

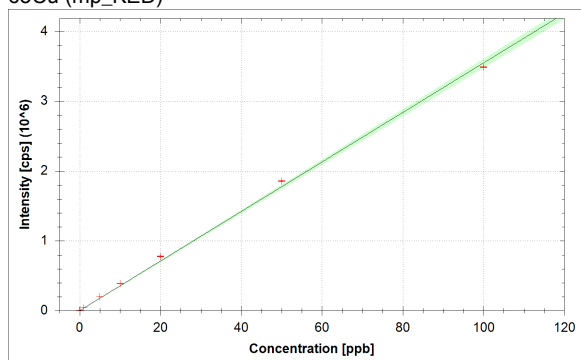
$$\text{LoD} = 0.0032 \text{ ppb}$$

Calibration

21-Dec-23 17:14:30



⁶⁵Cu (mp_KED)



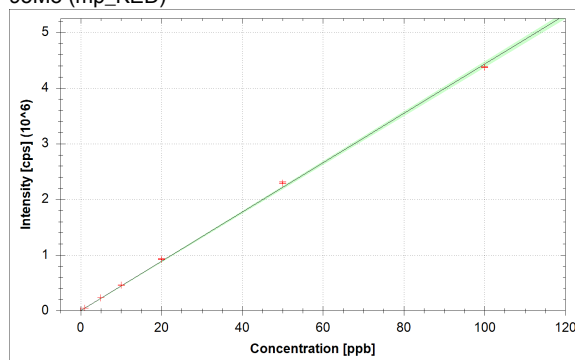
$$f(x) = 35465.6274 \cdot x + 1964.6627$$

$$R^2 = 0.9985$$

$$\text{BEC} = 0.055 \text{ ppb}$$

$$\text{LoD} = 0.0041 \text{ ppb}$$

⁹⁵Mo (mp_KED)



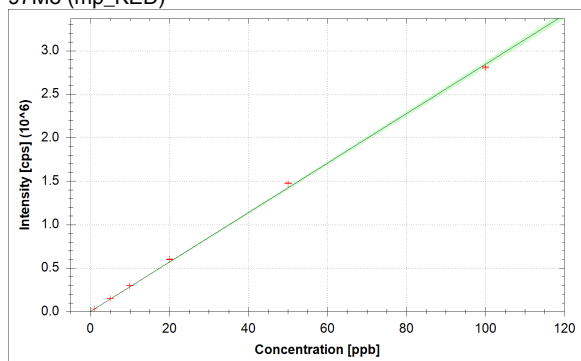
$$f(x) = 44270.8143 \cdot x + 1088.0521$$

$$R^2 = 0.9993$$

$$\text{BEC} = 0.025 \text{ ppb}$$

$$\text{LoD} = 0.0038 \text{ ppb}$$

⁹⁷Mo (mp_KED)



$$f(x) = 28427.4557 \cdot x + 700.5229$$

$$R^2 = 0.9993$$

$$\text{BEC} = 0.025 \text{ ppb}$$

$$\text{LoD} = 0.0025 \text{ ppb}$$

Calibration

21-Dec-23 17:14:30



Standards:

Analysis Index: 4
Analysis Name: M28SnPd 0 ppb 300µL HNO3 22.09.2023 mtr
AnalysisType: STD
Analysis Started at: 21-Dec-23 13:24:19
Standard (Stock): M94 0
Standard DF: 1

Category	Concentration average	Concentration RSD	Standard Concentration
52Cr (mp_KED)	0.000 ppb	2.6 %	0.000 ppb
53Cr (mp_KED)	0.000 ppb	5.0 %	0.000 ppb
55Mn (mp_KED)	0.000 ppb	7.5 %	0.000 ppb
56Fe (mp_KED)	0.000 ppb	0.8 %	0.000 ppb
57Fe (mp_KED)	0.000 ppb	6.0 %	0.000 ppb
59Co (mp_KED)	0.000 ppb	2.6 %	0.000 ppb
60Ni (mp_KED)	0.000 ppb	5.4 %	0.000 ppb
61Ni (mp_KED)	0.000 ppb	12.8 %	0.000 ppb
62Ni (mp_KED)	0.000 ppb	10.7 %	0.000 ppb
63Cu (mp_KED)	0.000 ppb	1.7 %	0.000 ppb
65Cu (mp_KED)	0.000 ppb	4.4 %	0.000 ppb
95Mo (mp_KED)	0.000 ppb	10.5 %	0.000 ppb
97Mo (mp_KED)	0.000 ppb	10.2 %	0.000 ppb

Calibration

21-Dec-23 17:14:30



Standards:

Analysis Index: 5
Analysis Name: M28SnPd 1 ppb 300µL HNO3 22.09.2023 mtr
AnalysisType: STD
Analysis Started at: 21-Dec-23 13:29:27
Standard (Stock): M94 1
Standard DF: 1

Category	Concentration average	Concentration RSD	Standard Concentration
52Cr (mp_KED)	1.063 ppb	0.7 %	1.000 ppb
53Cr (mp_KED)	1.069 ppb	1.3 %	1.000 ppb
55Mn (mp_KED)	1.074 ppb	0.7 %	1.000 ppb
56Fe (mp_KED)	1.019 ppb	0.5 %	1.000 ppb
57Fe (mp_KED)	1.031 ppb	3.6 %	1.000 ppb
59Co (mp_KED)	1.076 ppb	0.6 %	1.000 ppb
60Ni (mp_KED)	1.098 ppb	0.5 %	1.000 ppb
61Ni (mp_KED)	1.107 ppb	0.9 %	1.000 ppb
62Ni (mp_KED)	1.094 ppb	1.0 %	1.000 ppb
63Cu (mp_KED)	1.094 ppb	0.3 %	1.000 ppb
65Cu (mp_KED)	1.092 ppb	0.3 %	1.000 ppb
95Mo (mp_KED)	1.028 ppb	0.8 %	1.000 ppb
97Mo (mp_KED)	1.036 ppb	1.2 %	1.000 ppb

Calibration

21-Dec-23 17:14:30



Standards:

Analysis Index: 6
Analysis Name: M28SnPd 5 ppb 300µL HNO3 22.09.2023 mtr
AnalysisType: STD
Analysis Started at: 21-Dec-23 13:34:34
Standard (Stock): M94 5
Standard DF: 1

Category	Concentration average	Concentration RSD	Standard Concentration
52Cr (mp_KED)	5.457 ppb	0.3 %	5.000 ppb
53Cr (mp_KED)	5.449 ppb	0.7 %	5.000 ppb
55Mn (mp_KED)	5.471 ppb	0.6 %	5.000 ppb
56Fe (mp_KED)	5.282 ppb	0.4 %	5.000 ppb
57Fe (mp_KED)	5.274 ppb	1.2 %	5.000 ppb
59Co (mp_KED)	5.491 ppb	0.2 %	5.000 ppb
60Ni (mp_KED)	5.600 ppb	0.4 %	5.000 ppb
61Ni (mp_KED)	5.617 ppb	0.9 %	5.000 ppb
62Ni (mp_KED)	5.630 ppb	0.5 %	5.000 ppb
63Cu (mp_KED)	5.586 ppb	0.3 %	5.000 ppb
65Cu (mp_KED)	5.621 ppb	0.5 %	5.000 ppb
95Mo (mp_KED)	5.291 ppb	0.3 %	5.000 ppb
97Mo (mp_KED)	5.335 ppb	0.1 %	5.000 ppb

Calibration

21-Dec-23 17:14:30



Standards:

Analysis Index: 7
Analysis Name: M28SnPd 10 ppb 300µL HNO3 22.09.2023 mtr
AnalysisType: STD
Analysis Started at: 21-Dec-23 13:39:42
Standard (Stock): M94 10
Standard DF: 1

Category	Concentration average	Concentration RSD	Standard Concentration
52Cr (mp_KED)	10.606 ppb	0.5 %	10.000 ppb
53Cr (mp_KED)	10.656 ppb	0.4 %	10.000 ppb
55Mn (mp_KED)	10.717 ppb	0.2 %	10.000 ppb
56Fe (mp_KED)	10.274 ppb	0.3 %	10.000 ppb
57Fe (mp_KED)	10.405 ppb	0.7 %	10.000 ppb
59Co (mp_KED)	10.726 ppb	0.5 %	10.000 ppb
60Ni (mp_KED)	10.866 ppb	0.3 %	10.000 ppb
61Ni (mp_KED)	10.918 ppb	1.5 %	10.000 ppb
62Ni (mp_KED)	10.871 ppb	0.5 %	10.000 ppb
63Cu (mp_KED)	10.887 ppb	0.5 %	10.000 ppb
65Cu (mp_KED)	10.947 ppb	0.6 %	10.000 ppb
95Mo (mp_KED)	10.363 ppb	0.6 %	10.000 ppb
97Mo (mp_KED)	10.493 ppb	0.7 %	10.000 ppb

Calibration

21-Dec-23 17:14:30



Standards:

Analysis Index: 8
Analysis Name: M28SnPd 20 ppb 300µL HNO3 22.09.2023 mtr
AnalysisType: STD
Analysis Started at: 21-Dec-23 13:44:50
Standard (Stock): M94 20
Standard DF: 1

Category	Concentration average	Concentration RSD	Standard Concentration
52Cr (mp_KED)	21.366 ppb	0.6 %	20.000 ppb
53Cr (mp_KED)	21.378 ppb	0.8 %	20.000 ppb
55Mn (mp_KED)	21.594 ppb	0.7 %	20.000 ppb
56Fe (mp_KED)	20.722 ppb	0.9 %	20.000 ppb
57Fe (mp_KED)	20.718 ppb	1.3 %	20.000 ppb
59Co (mp_KED)	21.695 ppb	0.6 %	20.000 ppb
60Ni (mp_KED)	21.737 ppb	0.7 %	20.000 ppb
61Ni (mp_KED)	21.711 ppb	0.9 %	20.000 ppb
62Ni (mp_KED)	21.743 ppb	0.7 %	20.000 ppb
63Cu (mp_KED)	21.844 ppb	0.6 %	20.000 ppb
65Cu (mp_KED)	21.900 ppb	0.7 %	20.000 ppb
95Mo (mp_KED)	20.942 ppb	0.7 %	20.000 ppb
97Mo (mp_KED)	21.113 ppb	0.8 %	20.000 ppb

Calibration

21-Dec-23 17:14:30



Standards:

Analysis Index: 9
Analysis Name: M28SnPd 50 ppb 300µL HNO3 22.09.2023 mtr
AnalysisType: STD
Analysis Started at: 21-Dec-23 13:49:59
Standard (Stock): M94 50
Standard DF: 1

Category	Concentration average	Concentration RSD	Standard Concentration
52Cr (mp_KED)	54.660 ppb	0.4 %	50.000 ppb
53Cr (mp_KED)	54.534 ppb	0.6 %	50.000 ppb
55Mn (mp_KED)	52.064 ppb	0.5 %	50.000 ppb
56Fe (mp_KED)	60.101 ppb	0.5 %	50.000 ppb
57Fe (mp_KED)	59.791 ppb	0.2 %	50.000 ppb
59Co (mp_KED)	51.920 ppb	0.5 %	50.000 ppb
60Ni (mp_KED)	52.475 ppb	0.2 %	50.000 ppb
61Ni (mp_KED)	52.637 ppb	0.3 %	50.000 ppb
62Ni (mp_KED)	52.676 ppb	0.2 %	50.000 ppb
63Cu (mp_KED)	52.324 ppb	0.4 %	50.000 ppb
65Cu (mp_KED)	52.306 ppb	0.5 %	50.000 ppb
95Mo (mp_KED)	51.870 ppb	0.6 %	50.000 ppb
97Mo (mp_KED)	51.803 ppb	0.5 %	50.000 ppb

Calibration

21-Dec-23 17:14:30



Standards:

Analysis Index: 10
Analysis Name: M28SnPd 100 ppb 300µL HNO3 22.09.2023 mtr
AnalysisType: STD
Analysis Started at: 21-Dec-23 13:55:09
Standard (Stock): M94 100
Standard DF: 1

Category	Concentration average	Concentration RSD	Standard Concentration
52Cr (mp_KED)	97.313 ppb	0.3 %	100.000 ppb
53Cr (mp_KED)	97.369 ppb	0.1 %	100.000 ppb
55Mn (mp_KED)	98.553 ppb	0.2 %	100.000 ppb
56Fe (mp_KED)	94.764 ppb	0.0 %	100.000 ppb
57Fe (mp_KED)	94.907 ppb	0.1 %	100.000 ppb
59Co (mp_KED)	98.603 ppb	0.3 %	100.000 ppb
60Ni (mp_KED)	98.297 ppb	0.1 %	100.000 ppb
61Ni (mp_KED)	98.216 ppb	0.3 %	100.000 ppb
62Ni (mp_KED)	98.194 ppb	0.5 %	100.000 ppb
63Cu (mp_KED)	98.350 ppb	0.3 %	100.000 ppb
65Cu (mp_KED)	98.340 ppb	0.1 %	100.000 ppb
95Mo (mp_KED)	98.826 ppb	0.1 %	100.000 ppb
97Mo (mp_KED)	98.809 ppb	0.4 %	100.000 ppb